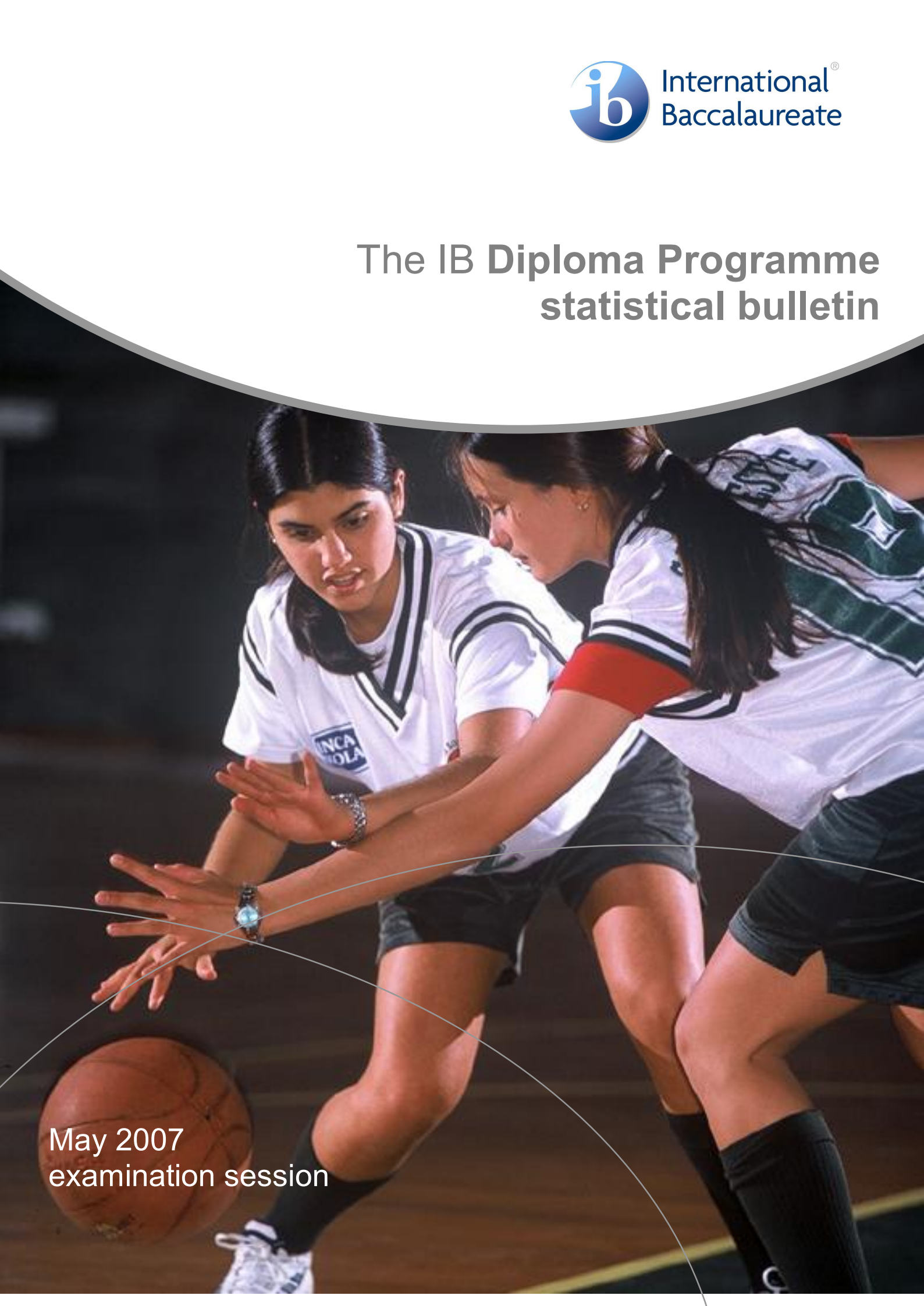


# The IB Diploma Programme statistical bulletin



May 2007  
examination session

The IB Diploma Programme statistical bulletin, May 2007 examination session

Published in November 2007

International Baccalaureate  
Peterson House, Malthouse Avenue, Cardiff Gate  
Cardiff, Wales CF23 8GL  
United Kingdom  
Phone: + 44 29 2954 7777  
Fax: + 44 29 2054 7778  
Website: [www.ibo.org](http://www.ibo.org)

© International Baccalaureate Organization 2007

Statistical queries should be directed to the  
management information coordinator:

Phone: +44 29 2054 7657  
Fax: +44 29 2054 7778  
Email: [statistics@ibo.org](mailto:statistics@ibo.org)

# Contents

<b>Tables and graphs</b>		Page
<b>Index: key to abbreviations</b>		<b>4</b>
<b>PART A: general school statistics</b>		<b>5–7</b>
1	Number of schools following the Diploma Programme 2003–2007	5
2	Number and percentage of schools following the Diploma Programme by working language 2003–2007	6
3	Number and percentage of schools following the Diploma Programme by IB region 2003–2007	7
<b>PART B: registration statistics</b>		<b>8–27</b>
4	Number of schools registering candidates May 2003–May 2007	8
5	Number of May session schools registering candidates May 2003–May 2007	8
6	Number of schools registering candidates by working language May 2003–May 2007	9
7	Number and percentage of schools registering candidates by IB region May 2003–May 2007	10
8	Number of candidates registered by category May 2003–May 2007	11
9	Number of candidates registered by gender May 2003–May 2007	13
10	Number of candidates registered by IB region May 2003–May 2007	14
11	Number of candidates registered by category, gender and IB region May 2007	15
12	Summary of Diploma Programme examination entries: schools with registered candidates May 1975–May 2007	16
13	Number of schools that registered a particular number of candidates May 2003–May 2007	18
14	Subject registration summary May 2007	19
15	Subject group registrations May 2003–May 2007	19
16	Additional Diploma Programme requirements: extended essay and theory of knowledge May 2007	20
17	Subject registration summary: extended essay by subject group May 2007	20
18	Subject registration summary: theory of knowledge by language May 2007	21
19	Nationalities of candidates registered May 2007	22
20	Number of countries represented by examination session May 2003–May 2007	25
21	Number of candidates registered by country May 2007	26

**PART C: results statistics****28–42**

22	Analysis of examination results by subject and level May 2007	28
23	Diploma and retake candidates (D+R): distribution of points totals May 2007	36
24	Retake candidates only (R): distribution of points totals May 2007	37
25	Diploma score distribution: diploma and retake candidates (D+R) and retake candidates only (R) May 2007	38
26	Extended essay results May 2007	39
27	Theory of knowledge results May 2007	40
28	Distribution of additional points May 2003–May 2007	41
29	Mean points score worldwide May 2003–May 2007	42
30	Mean grade worldwide May 2003–May 2007	42
31	Pass rate worldwide May 2003–May 2007	42
32	Number of diplomas and bilingual diplomas awarded May 2003–May 2007	42
33	Number of diplomas awarded by IB region May 2007	42

# Index: key to abbreviations

## Categories of registration

Diploma Programme candidates must register in one of four categories. These are identified by one of the following letters.

- D**     **Diploma:** candidates intending to complete the requirements for the award of an IB diploma.
- R**     **Retake:** previous IB diploma candidates who are seeking to improve their results. The highest grade obtained for a subject will contribute towards the IB diploma.
- C**     **Certificate:** candidates taking one or more subjects who are not seeking the award of the IB diploma.
- A**     **Anticipated:** candidates intending to complete the requirements for one or two standard level subjects (excluding languages *ab initio* and pilot subjects) at the end of their first year of the Diploma Programme. They must complete all remaining IB diploma requirements in the corresponding examination session in the following year.

## IB regions

Schools that are authorized to offer the IB Diploma Programme are grouped by geographical region. The abbreviations used in the tables are the codes describing the following geographical regions:

IBAEM	IB Africa, Europe and the Middle East
IBAP	IB Asia-Pacific
IBLA	IB Latin America
IBNA	IB North America and the Caribbean

## Other abbreviations

HL	Higher level
SL	Standard level
EE	Extended essay
TOK	Theory of knowledge
PS	Pilot subjects
SBS	School-based syllabuses

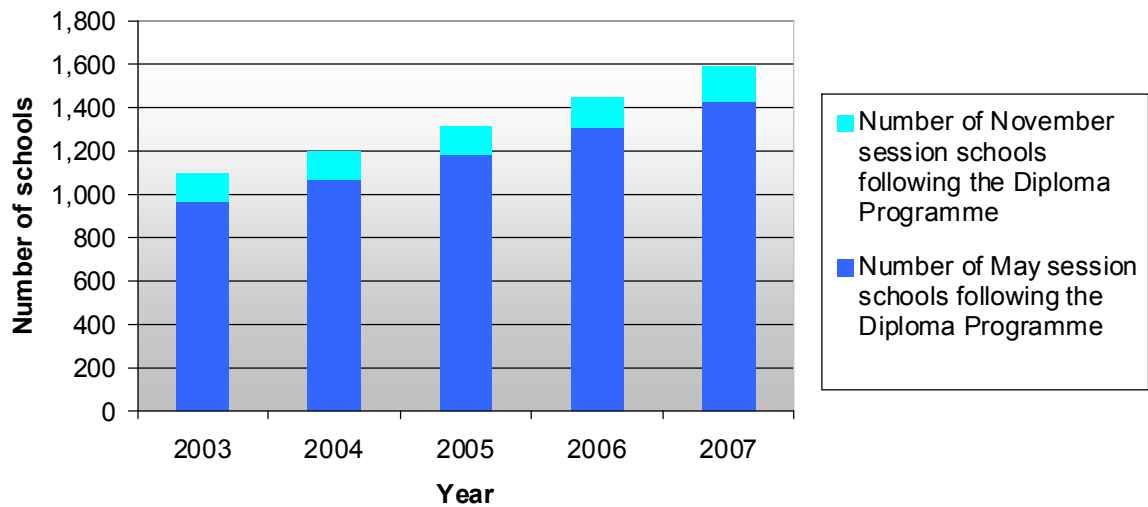
## PART A: general school statistics

### 1 Number of schools following the Diploma Programme 2003–2007

Number of schools following the Diploma Programme*	2003	2004	2005	2006	2007
May session schools	964	1,067	1,179	1,298	1,428
November session schools	128	132	135	143	160
<b>Total</b>	<b>1,092</b>	<b>1,199</b>	<b>1,314</b>	<b>1,441</b>	<b>1,588</b>

\*as of 31 May each year

**Graph 1.1** Number of schools following the Diploma Programme 2003–2007

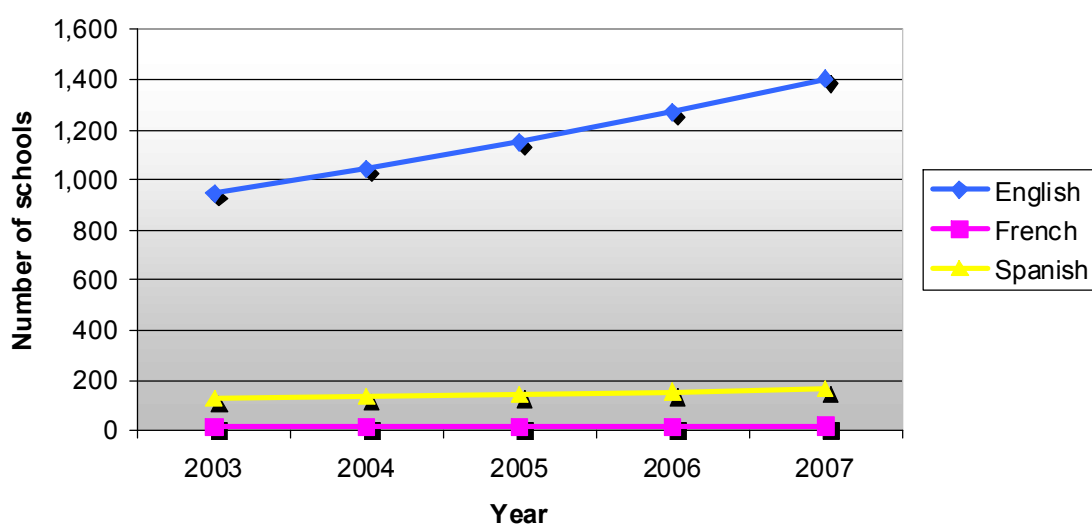


## 2 Number and percentage of schools following the Diploma Programme by working language 2003–2007

Number of schools following the Diploma Programme by working language*	2003	2004	2005	2006	2007
English	947	1,045	1,150	1,269	1,403
French	18	18	18	18	19
Spanish	127	136	146	154	166
<b>Total</b>	<b>1,092</b>	<b>1,199</b>	<b>1,314</b>	<b>1,441</b>	<b>1,588</b>

\*as of 31 May each year

Graph 2.1 Number of schools following the Diploma Programme by working language 2003–2007



Percentage of schools following the Diploma Programme by working language*	2003	2004	2005	2006	2007
English	86.72%	87.16%	87.52%	88.06%	88.35%
French	1.65%	1.50%	1.37%	1.25%	1.20%
Spanish	11.63%	11.34%	11.11%	10.69%	10.45%

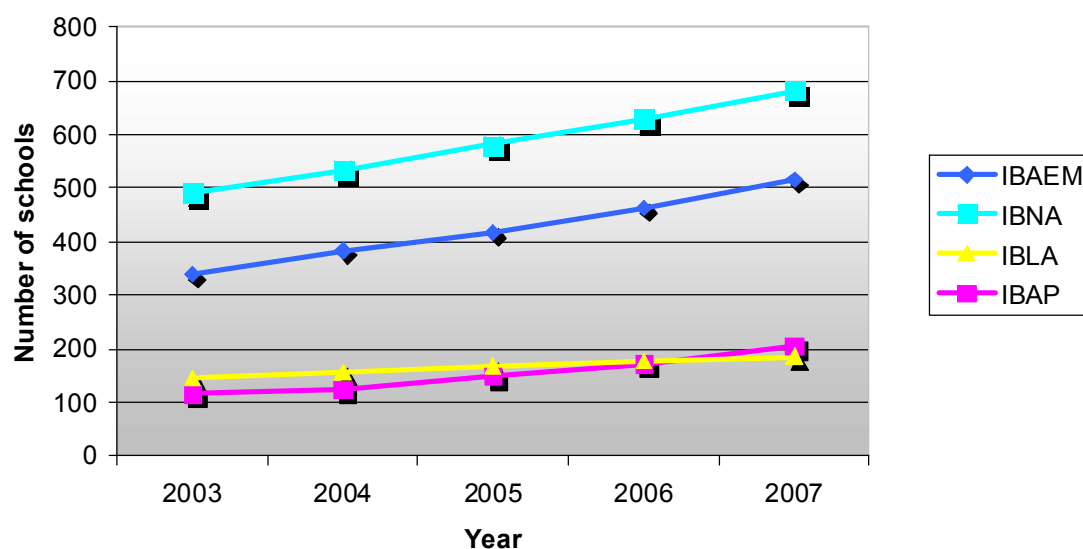
\*as of 31 May each year

### 3 Number and percentage of schools following the Diploma Programme by IB region 2003–2007

Number of schools following the Diploma Programme by IB region*	2003	2004	2005	2006	2007
IBAEM	339	383	417	463	515
IBAP	116	125	148	172	206
IBLA	145	157	168	177	186
IBNA	492	534	581	629	681
<b>Total</b>	<b>1,092</b>	<b>1,199</b>	<b>1,314</b>	<b>1,441</b>	<b>1,588</b>

\*as of 31 May each year

Graph 3.1 Number of schools following the Diploma Programme by IB region 2003–2007



Percentage of schools following the Diploma Programme by IB region*	2003	2004	2005	2006	2007
IBAEM	31.04%	31.94%	31.74%	32.13%	32.43%
IBAP	10.62%	10.43%	11.26%	11.94%	12.97%
IBLA	13.28%	13.09%	12.79%	12.28%	11.71%
IBNA	45.05%	44.54%	44.22%	43.65%	42.88%

\*as of 31 May each year

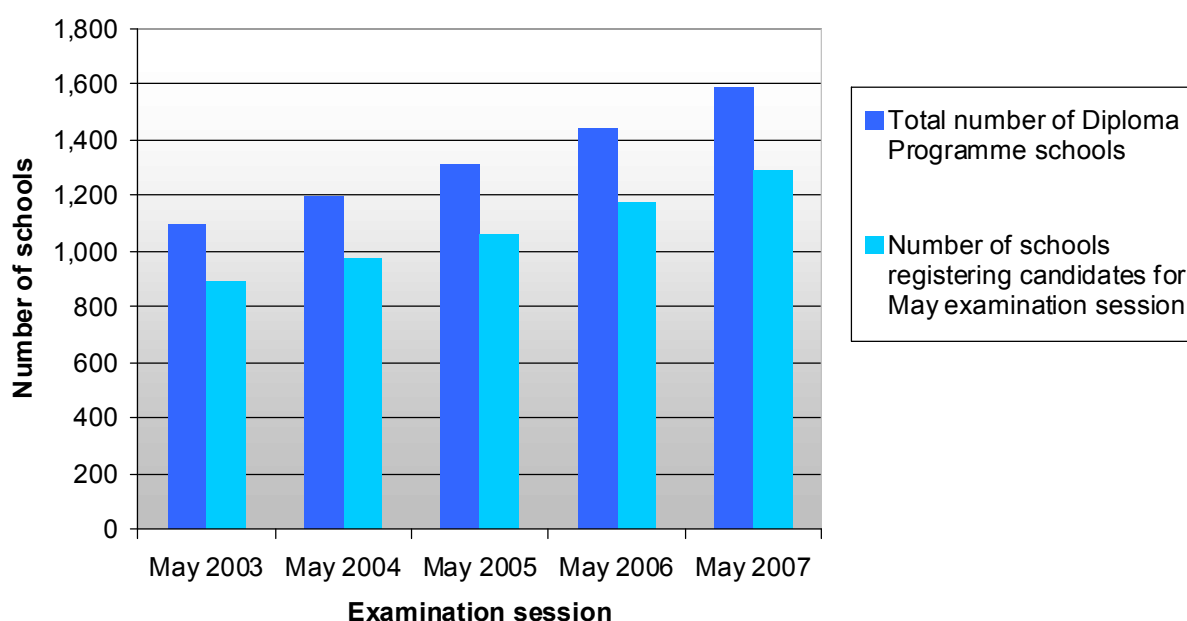


## PART B: registration statistics

### 4 Number of schools registering candidates May 2003–May 2007

	May 2003	May 2004	May 2005	May 2006	May 2007
<b>Number of schools registering candidates</b>	890	974	1,059	1,178	1,289
<b>Percentage of total number of schools</b>	81.50%	81.23%	80.59%	81.75%	81.17%

**Graph 4.1** Number of schools registering candidates May 2003–May 2007



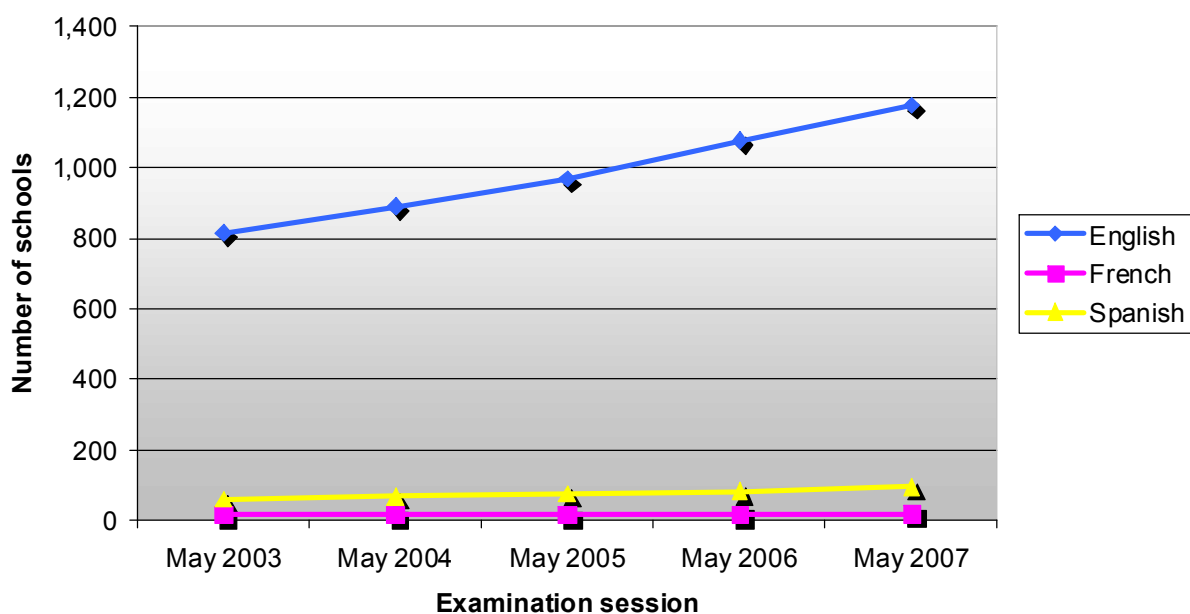
### 5 Number of May session schools registering candidates May 2003–May 2007

	May 2003	May 2004	May 2005	May 2006	May 2007
<b>Number of May session schools registering candidates</b>	851	925	1,010	1,123	1,239
<b>Total number of May session schools</b>	964	1,067	1,179	1,298	1,428
<b>Percentage of all May session schools</b>	88.28%	86.69%	85.67%	86.52%	86.76%

## 6 Number of schools registering candidates by working language May 2003–May 2007

Number of schools registering candidates by working language	May 2003	May 2004	May 2005	May 2006	May 2007
English	815	891	968	1,078	1,177
French	15	15	15	17	18
Spanish	60	68	76	83	94
<b>Total</b>	<b>890</b>	<b>974</b>	<b>1,059</b>	<b>1,178</b>	<b>1,289</b>

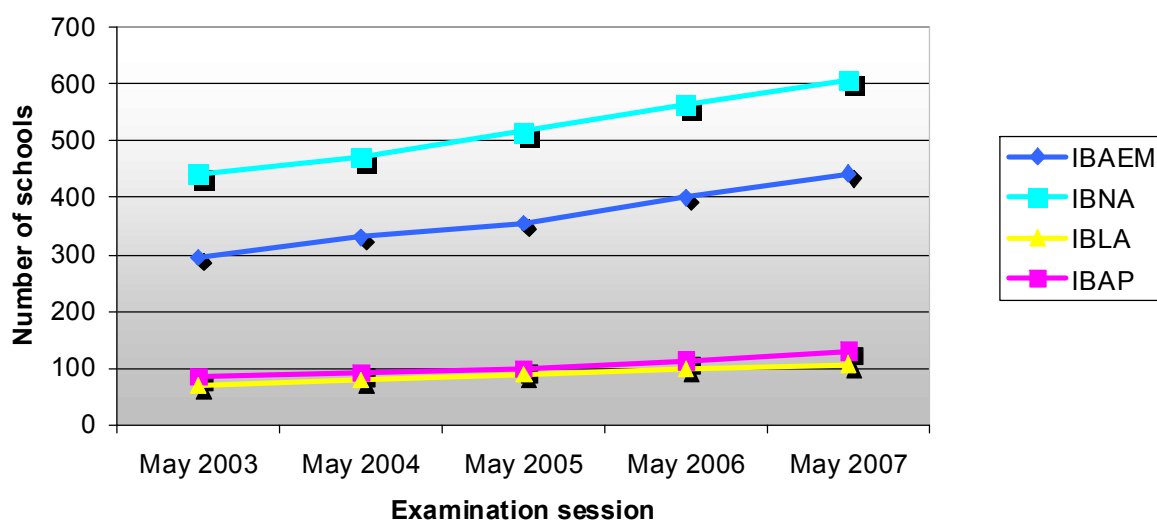
Graph 6.1 Number of schools registering candidates by working language May 2003–May 2007



## 7 Number and percentage of schools registering candidates by IB region May 2003–May 2007

Number of schools registering candidates by IB region	May 2003	May 2004	May 2005	May 2006	May 2007
IBAEM	296	331	355	401	443
IBAP	85	93	99	114	131
IBLA	69	80	89	99	107
IBNA	440	470	516	564	608
<b>Total</b>	<b>890</b>	<b>974</b>	<b>1,059</b>	<b>1,178</b>	<b>1,289</b>

Graph 7.1 Number of schools registering candidates by IB region May 2003–May 2007



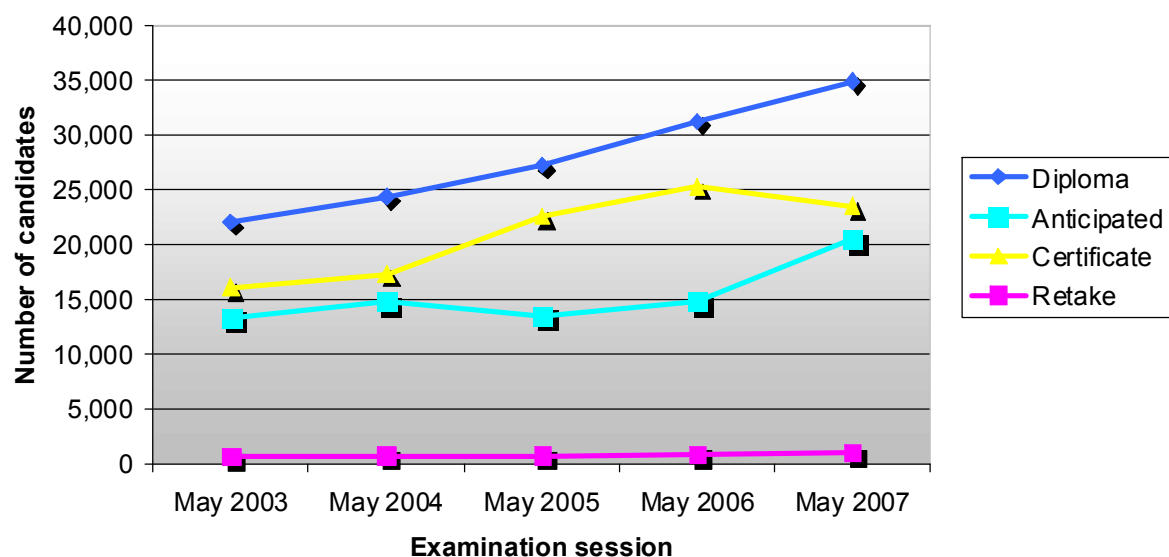
Percentage of schools registering candidates by IB region	May 2003	May 2004	May 2005	May 2006	May 2007
IBAEM	33.26%	33.98%	33.52%	34.04%	34.37%
IBAP	9.55%	9.55%	9.35%	9.68%	10.16%
IBLA	7.75%	8.21%	8.40%	8.40%	8.30%
IBNA	49.44%	48.25%	48.73%	47.88%	47.17%

## 8 Number of candidates registered by category May 2003–May 2007

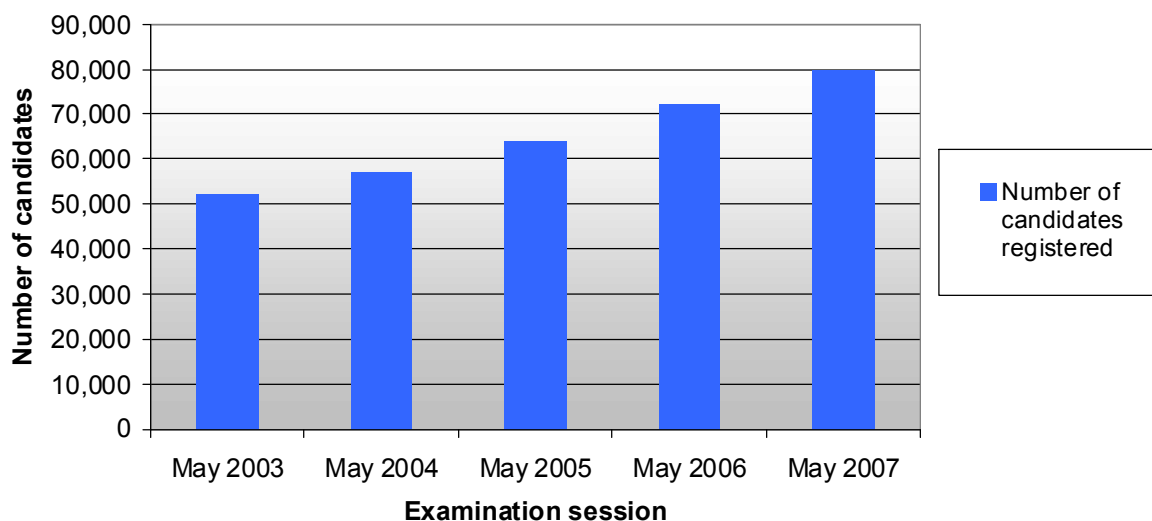
Number of candidates registered by category	May 2003	May 2004	May 2005	May 2006	May 2007
Diploma	22,045	24,388	27,249	31,249	34,912
Retake	617	723	722	877	991
Certificate	16,106	17,337	22,597	25,272	23,530*
Anticipated	13,342	14,782	13,513	14,772	20,501*
<b>Total</b>	<b>52,110</b>	<b>57,230</b>	<b>64,081</b>	<b>72,170</b>	<b>79,934</b>

\* Please note: Anticipated candidates are allowed to change their category to certificate and this will affect these figures.

Graph 8.1 Number of candidates registered by category May 2003–May 2007



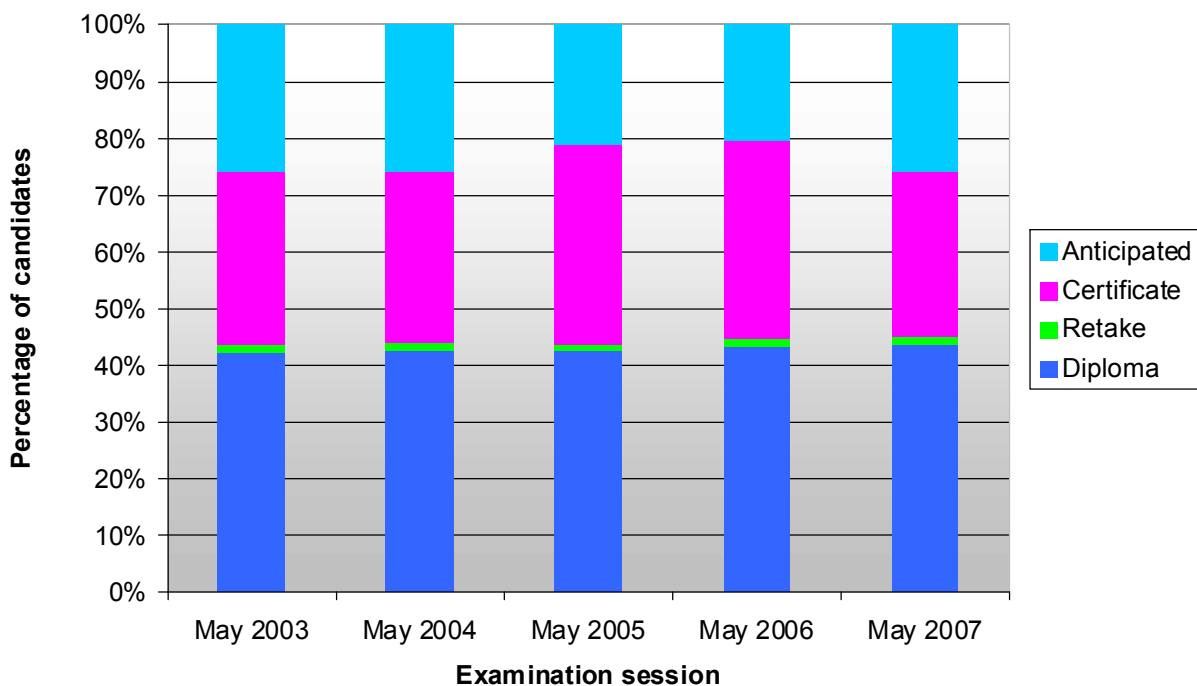
**Graph 8.2 Number of candidates registered May 2003–May 2007**



Percentage of candidates registered by category	May 2003	May 2004	May 2005	May 2006	May 2007
Diploma	42.30%	42.61%	42.52%	43.30%	43.68%
Retake	1.18%	1.26%	1.13%	1.22%	1.24%
Certificate	30.91%	30.29%	35.26%	35.02%	29.44%*
Anticipated	25.60%	25.83%	21.09%	20.47%	25.65%*

\* Please note: Anticipated candidates are allowed to change their category to certificate and this will affect these figures.

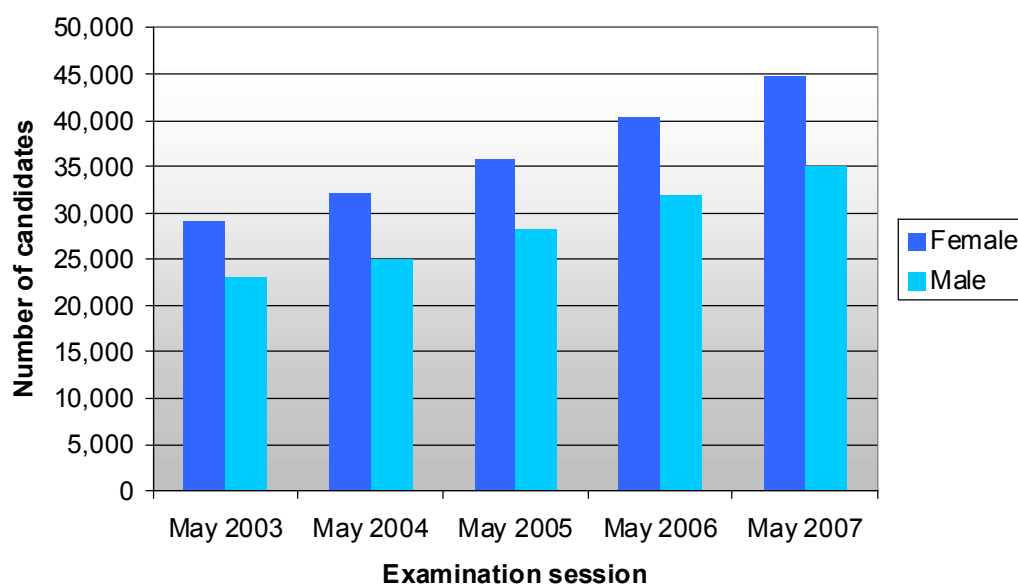
**Graph 8.3 Percentages of candidates registered May 2003–May 2007**



## 9 Number of candidates registered by gender May 2003–May 2007

Number of candidates registered by gender	May 2003	May 2004	May 2005	May 2006	May 2007
Female	29,136	32,118	35,824	40,285	44,833
Male	22,974	25,112	28,257	31,885	35,101
<b>Total</b>	<b>52,110</b>	<b>57,230</b>	<b>64,081</b>	<b>72,170</b>	<b>79,934</b>

Graph 9.1 Number of candidates registered by gender May 2003–May 2007

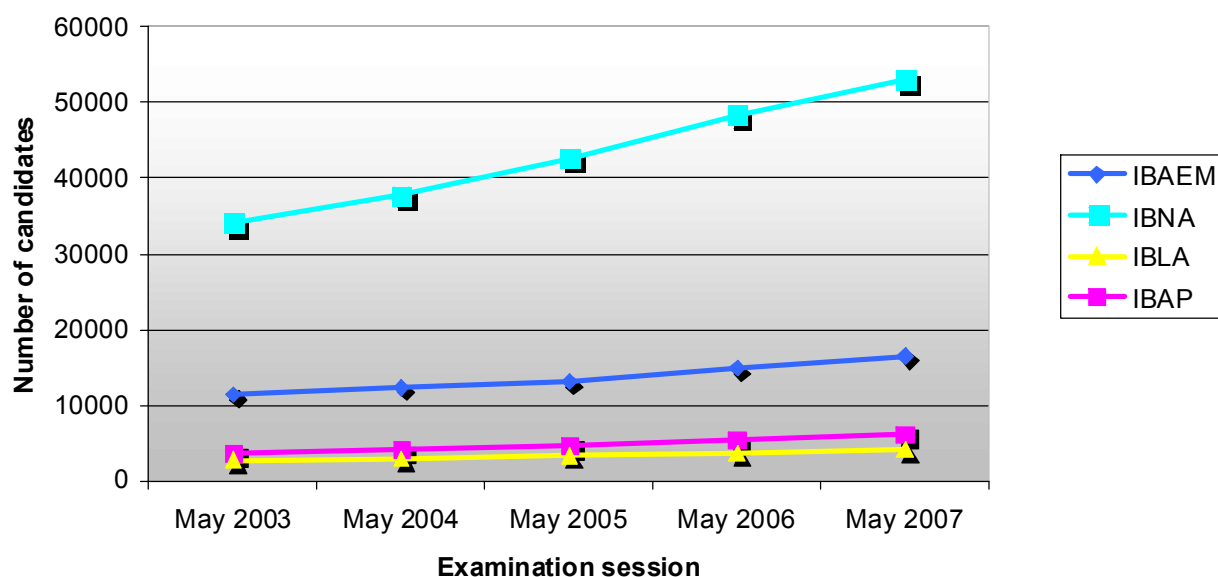


Percentage of candidates registered by gender	May 2003	May 2004	May 2005	May 2006	May 2007
Female	55.91%	56.12%	55.90%	55.82%	56.09%
Male	44.09%	43.88%	44.10%	44.18%	43.91%

## 10 Number of candidates registered by IB region May 2003–May 2007

Number of candidates registered by IBO region	May 2003	May 2004	May 2005	May 2006	May 2007
IBAEM	11,458	12,347	13,221	14,884	16,533
IBAP	3,771	4,136	4,782	5,382	6,240
IBLA	2,810	3,021	3,395	3,702	4,188
IBNA	34,071	37,726	42,683	48,202	52,973
<b>Total</b>	<b>52,110</b>	<b>57,230</b>	<b>64,081</b>	<b>72,170</b>	<b>79,934</b>

Graph 10.1 Number of candidates registered by IB region May 2003–May 2007

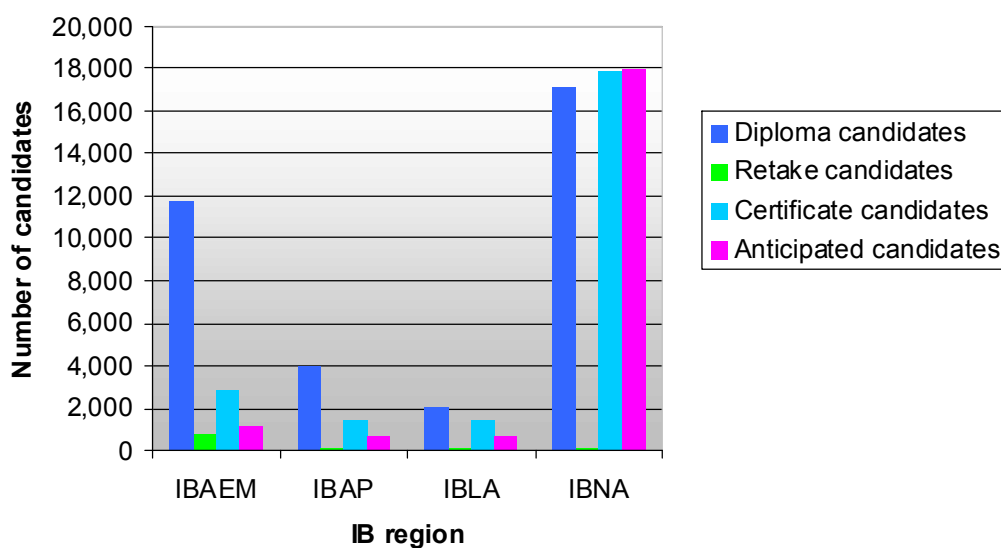


Percentage of candidates registered by IB region	May 2003	May 2004	May 2005	May 2006	May 2007
IBAEM	21.99%	21.57%	20.63%	20.62%	20.68%
IBAP	7.24%	7.23%	7.46%	7.46%	7.81%
IBLA	5.39%	5.28%	5.30%	5.13%	5.24%
IBNA	65.38%	65.92%	66.61%	66.79%	66.27%

## 11 Number of candidates registered by category, gender and IB region May 2007

IB region	Category	Number of candidates registered		Total number of candidates registered
		Number of female candidates	Number of male candidates	
IBAEM	Diploma	6,271	5,441	11,712
	Retake	390	375	765
	Certificate	1,480	1,409	2,889
	Anticipated	618	549	1,167
IBAP	Diploma	2,078	1,935	4,013
	Retake	19	51	70
	Certificate	678	723	1,401
	Anticipated	350	406	756
IBLA	Diploma	1,059	922	2,051
	Retake	31	31	62
	Certificate	678	723	1,401
	Anticipated	358	316	674
IBNA	Diploma	9,891	7,245	17,136
	Retake	58	36	94
	Certificate	10,454	7,385	17,839
	Anticipated	10,421	7,483	17,904
<b>Total</b>		<b>44,833</b>	<b>35,101</b>	<b>79,934</b>

Graph 11.1 Number of candidates registered by category and IB region May 2007

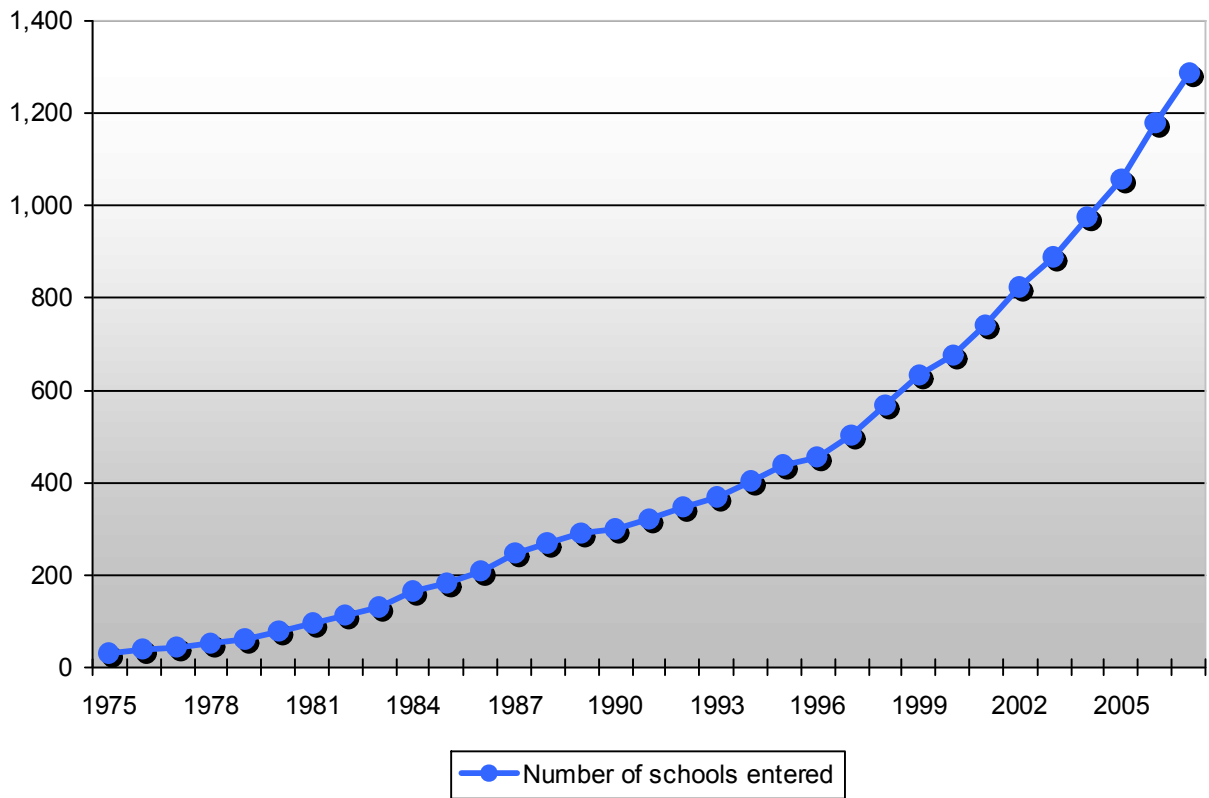




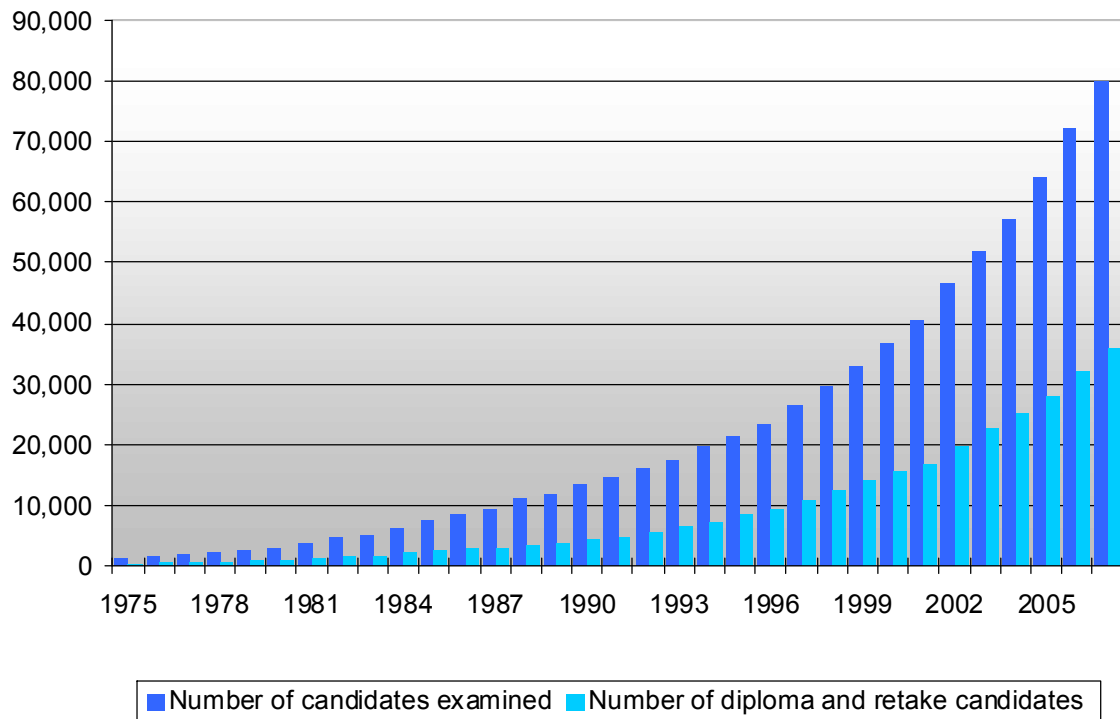
## 12 Summary of Diploma Programme examination entries: schools with registered candidates May 1975–May 2007

Year	Number of schools entered	Percentage of increase	Number of candidates examined	Percentage of increase	Average number of candidates per school	Number of diploma and retake candidates	Average number of diploma and retake candidates per school
1975	30	30%	1,217	19%	40.6	377	12.6
1976	37	23%	1,600	31%	43.2	567	15.3
1977	44	19%	1,966	23%	44.7	644	14.6
1978	52	18%	2,222	13%	42.7	680	13.1
1979	61	17%	2,479	12%	40.6	835	13.7
1980	76	25%	2,845	15%	37.4	1,005	13.2
1981	96	26%	3,719	31%	38.7	1,244	13.0
1982	111	16%	4,644	25%	41.8	1,505	13.6
1983	131	18%	5,021	8%	38.3	1,603	12.2
1984	163	24%	6,385	27%	39.2	2,183	13.4
1985	180	10%	7,606	19%	42.3	2,440	13.6
1986	209	16%	8,389	10%	40.1	2,679	12.8
1987	246	18%	9,387	12%	38.2	2,942	12.0
1988	270	10%	11,233	20%	41.6	3,564	13.2
1989	291	8%	11,946	6%	41.1	3,904	13.4
1990	301	3%	13,321	12%	44.3	4,287	14.2
1991	322	7%	14,749	11%	45.8	4,811	14.9
1992	346	7%	16,078	9%	46.5	5,693	16.5
1993	370	7%	17,552	9%	47.4	6,432	17.4
1994	405	9%	19,509	11%	48.2	7,331	18.1
1995	437	8%	21,361	9%	48.9	8,403	19.2
1996	455	4%	23,448	10%	51.5	9,396	20.7
1997	502	10%	26,570	13%	52.9	10,868	21.6
1998	568	13%	29,505	11%	51.9	12,476	22.0
1999	631	11%	33,143	12%	52.5	14,001	22.2
2000	678	7%	36,758	11%	54.2	15,592	23.0
2001	743	10%	40,579	10%	54.6	16,880	22.7
2002	825	11%	46,659	15%	56.6	19,796	24.0
2003	890	8%	52,110	12%	58.6	22,662	25.5
2004	974	9%	57,230	10%	58.8	25,111	25.8
2005	1,059	9%	64,081	12%	60.5	27,971	26.4
2006	1,178	11%	72,170	13%	61.3	32,126	27.3
2007	1,289	9%	79,934	11%	62.0	35,903	30.2

**Graph 12.1 Summary of Diploma Programme examination entries: schools with candidates registered May 1975–May 2007**



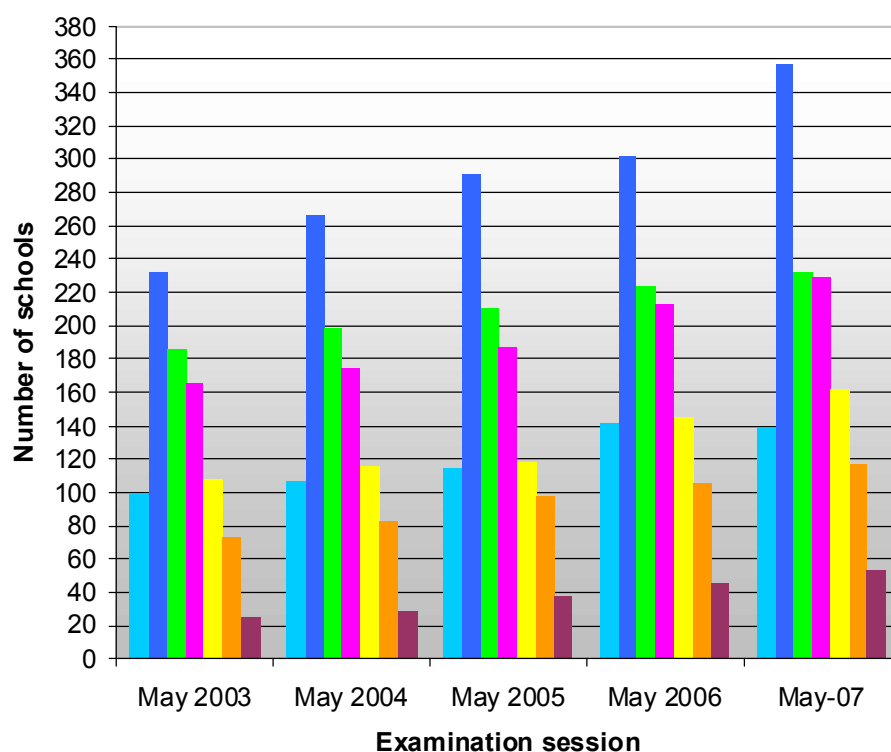
**Graph 12.2 Summary of Diploma Programme examination entries: total number of candidates registered and number of diploma and retake candidates registered May 1975–May 2007**



### 13 Number of schools that registered a particular number of candidates May 2003–May 2007

Number of schools that registered a particular number of candidates	May 2003	May 2004	May 2005	May 2006	May 2007
1–10 candidates	100	107	115	142	138
11–30 candidates	232	266	292	302	357
31–50 candidates	186	199	211	224	233
51–80 candidates	166	175	187	213	229
81–120 candidates	108	116	118	145	162
121–200 candidates	73	83	98	106	117
Over 200 candidates	25	28	38	46	53
<b>Total</b>	<b>890</b>	<b>974</b>	<b>1,059</b>	<b>1,178</b>	<b>1,289</b>

**Graph 13.1** Number of schools that registered a particular number of candidates May 2003–May 2007

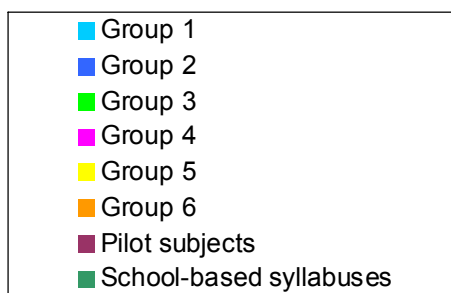
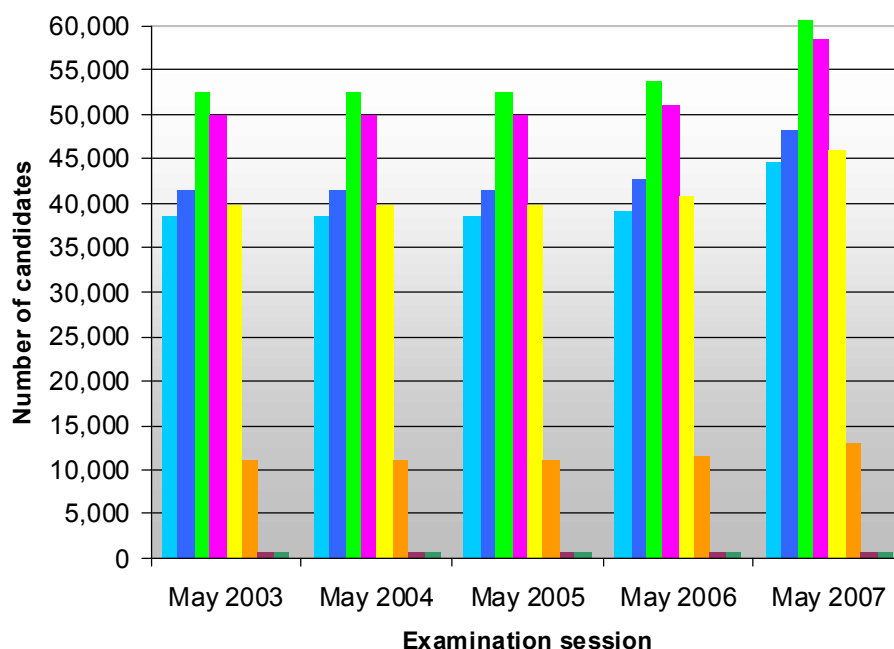


## 14 Subject registration summary May 2007

Subject group	Subject registrations					Number of subjects		
	English	French	Spanish	German	Total	Higher level	Standard level	Total
Group 1	–	–	–	–	44,600	47	64	111
Group 2	–	–	–	–	48,259	39	53	92
Group 3	58,109	603	2,605	90	61,407	13	10	23
Group 4	55,335	601	2,373	90	58,399	4	6	10
Group 5	43,228	498	2,160		45,886	3	4	7
Group 6	12,353	32	637		13,022	3	6	9
PS	765				765	2	4	6
SBS	670		11		681		15	15
<b>Totals</b>	<b>170,460</b>	<b>1,734</b>	<b>7,786</b>	<b>180</b>	<b>273,019</b>	<b>111</b>	<b>162</b>	<b>273</b>

## 15 Subject group registrations May 2003–May 2007

Graph 15.1 Number of candidates registered for subject groups May 2003–May 2007



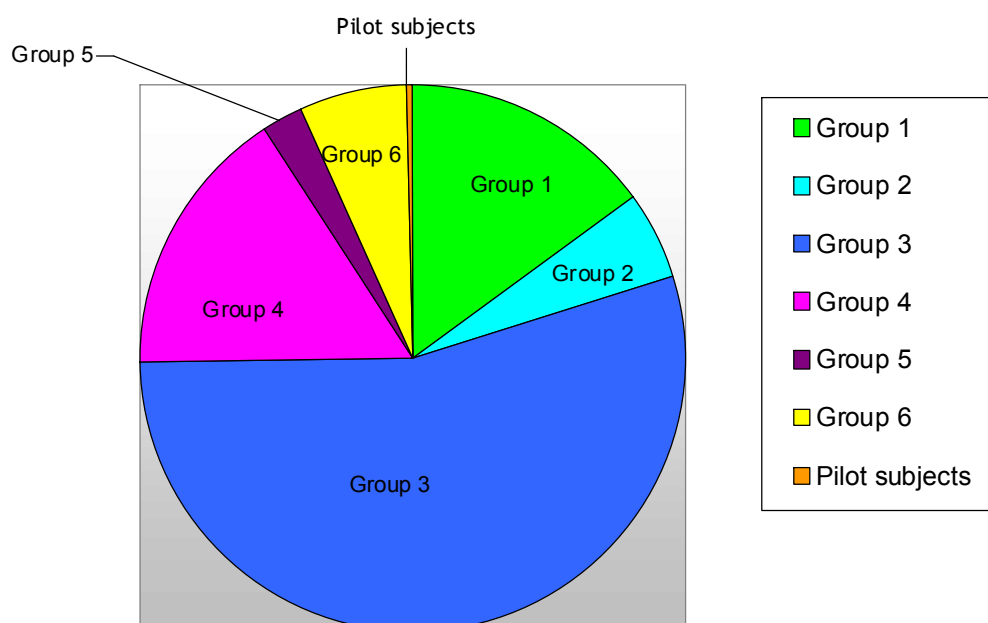
## 16 Additional Diploma Programme requirements: extended essay and theory of knowledge May 2003–2007

Number of candidates registered for extended essay and theory of knowledge	May 2003	May 2004	May 2005	May 2006	May 2007
Extended essay	22,208	24,609	28,069	32,068	35,828
Theory of knowledge	22,219	24,610	27,487	31,576	35,227

## 17 Subject registration summary: extended essay by subject group May 2007

Number of EE candidates registered for a particular subject group	Group 1	Group 2	Group 3	Group 4	Group 5	Group 6	Pilot subjects	Total
	5,382	1,929	19,494	5,721	918	2,313	71	35,828
Percentage of EE candidates registered for a particular subject group	15.02%	5.38%	54.41%	15.97%	2.56%	6.46%	0.20%	100.00%

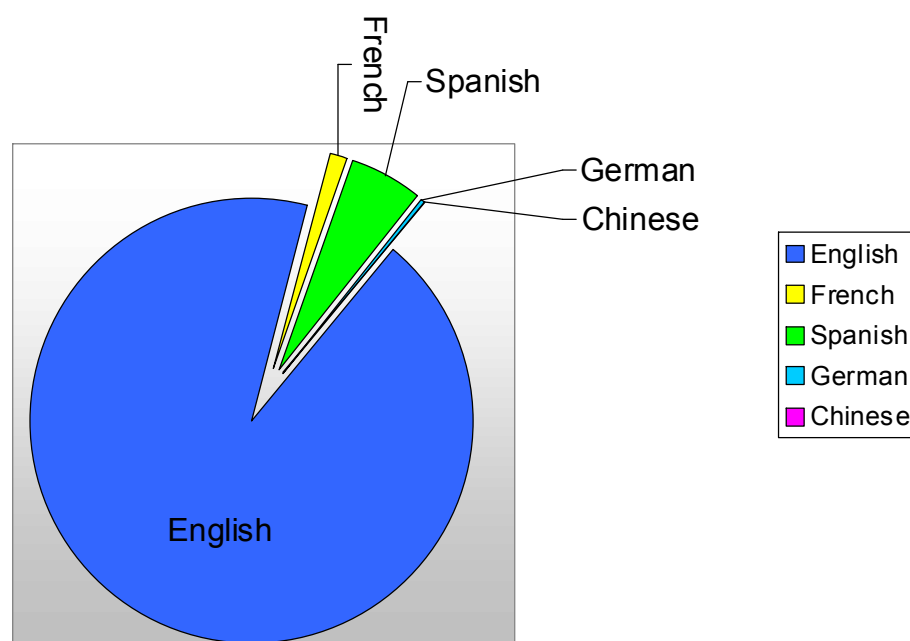
Graph 17.1 Subject registration summary: extended essay by subject group May 2007



## 18 Subject registration summary: theory of knowledge by language May 2007

Theory of knowledge registration by language	English	French	Spanish	German	Chinese	Total
Number of candidates registered	32,811	436	1,926	15	39	35,227
Percentage of candidates registered	93.14%	1.24%	5.47%	0.04%	0.11%	100.00%

Graph 18.1 Subject registration summary: theory of knowledge by language May 2007



## 19 Nationalities of candidates registered May 2007

Country name	Number of candidates	Country name	Number of candidates
AFGANISTAN	93	CYPRUS	20
ALBANIA	42	CZECH REPUBLIC	88
ALGERIA	15	DENMARK	330
AMERICAN SAMOA	3	DOMINICAN REPUBLIC	47
ANGOLA	12	ECUADOR	332
ANTIGUA AND BARBUDA	1	EGYPT	206
ARGENTINA	142	EL SALVADOR	94
ARMENIA	17	EQUATORIAL GUINEA	1
AUSTRALIA	360	ERITREA	7
AUSTRIA	162	ESTONIA	23
AZERBAIJAN	8	ETHIOPIA	86
BAHAMAS	39	FALKLAND ISLANDS (MALVINAS)	1
BAHRAIN	179	FAROE ISLANDS	1
BANGLADESH	93	FIJI	9
BARBADOS	4	FINLAND	464
BELARUS	23	FRANCE	466
BELGIUM	195	GAMBIA	2
BELIZE	4	GEORGIA	11
BENIN	2	GERMANY	1,188
BERMUDA	66	GHANA	125
BHUTAN	10	GREECE	373
BOLIVIA	78	GREENLAND	2
BOSNIA AND HERZEGOVINA	78	GRENADA	1
BOTSWANA	14	GUAM	1
BRAZIL	408	GUATEMALA	31
BRITISH INDIAN OCEAN TERRITORY	6	GUINEA	5
BRUNEI DARUSSALAM	27	GUYANA	9
BULGARIA	104	HAITI	30
BURKINA FASO	7	HOLY SEE (VATICAN CITY STATE)	1
BURUNDI	5	HONDURAS	102
CAMBODIA	16	HONG KONG	171
CAMEROON	14	HUNGARY	88
CANADA	7,115	ICELAND	19
CAPE VERDE	1	INDIA	1,365
CAYMAN ISLANDS	1	INDONESIA	289
CENTRAL AFRICAN REPUBLIC	1	IRAN, ISLAMIC REPUBLIC OF	93
CHILE	60	IRAQ	19
CHINA	1,058	IRELAND	87
COLOMBIA	662	ISRAEL	102
CONGO	6	ITALY	402
CONGO, THE DEMOCRATIC REPUBLIC OF THE	11	JAMAICA	49
COSTA RICA	96	JAPAN	549
COTE D'IVOIRE	6	JORDAN	282
CROATIA	58	KAZAKHSTAN	48
CUBA	26	KENYA	125

Country name	Number of candidates	Country name	Number of candidates
KOREA, DEMOCRATIC PEOPLE'S REPUBLIC OF	88	PAPUA NEW GUINEA	3
KOREA, REPUBLIC OF	909	PARAGUAY	7
KUWAIT	32	PERU	130
KYRGYZSTAN	8	PHILIPPINES	260
LAO PEOPLE'S DEMOCRATIC REPUBLIC	7	POLAND	592
LATVIA	57	PORTUGAL	138
LEBANON	107	PUERTO RICO	20
LESOTHO	41	QATAR	40
LIBERIA	6	ROMANIA	113
LIBYAN ARAB JAMAHIRIYA	9	RUSSIAN FEDERATION	357
LIECHTENSTEIN	2	RWANDA	7
LITHUANIA	87	SAINT LUCIA	1
LUXEMBOURG	16	SAMOA	1
MACAO	1	SAUDI ARABIA	61
MACEDONIA, THE FORMER YUGOSLAV REPUBLIC OF	29	SENEGAL	31
MADAGASCAR	4	SERBIA	41
MALAWI	16	SERBIA AND MONTENEGRO	7
MALAYSIA	652	SEYCHELLES	1
MALDIVES	12	SIERRA LEONE	12
MALTA	7	SINGAPORE	165
MAURITANIA	3	SLOVAKIA	69
MAURITIUS	24	SLOVENIA	57
MAYOTTE	1	SALOMON ISLANDS	1
MEXICO	2,108	SOMALIA	27
MOLDOVA, REPUBLIC OF	11	SOUTH AFRICA	134
MONACO	1	SPAIN	1,165
MONGOLIA	25	SRI LANKA	59
MONTENEGRO	8	SUDAN	26
MOROCCO	69	SWAZILAND	8
MOZAMBIQUE	6	SWEDEN	1,053
MYANMAR	14	SWITZERLAND	306
NAMIBIA	7	SYRIAN ARAB REPUBLIC	36
NEPAL	49	TAIWAN	215
NETHERLANDS	1,593	TIJKISTAN	4
NETHERLANDS ANTILLES	12	TANZANIA, UNITED REPUBLIC OF	64
NEW ZEALAND	88	THAILAND	333
NICARAGUA	14	TIMOR-LESTE	4
NIGER	7	TOGO	21
NIGERIA	99	TONGA	2
NORWAY	530	TRINIDAD AND TOBAGO	17
OMAN	69	TUNISIA	4
PAKISTAN	200	TURKEY	419
PALAU	2	TURKS AND CAICOS ISLANDS	2
PALESTINIAN TERRITORY, OCCUPIED	53	UGANDA	27
PANAMA	25	UKRAINE	103



Country name	Number of candidates	Country name	Number of candidates
UNITED ARAB EMIRATES	17	VIRGIN ISLANDS, U.S.	1
UNITED KINGDOM	3,008	WESTERN SAHARA	1
UNITED STATES	43,751	YEMEN	3
UNITED STATES MINOR OUTLINING ISLANDS	2	YUGOSLAVIA	5
URUGUAY	197	ZAMBIA	16
UZBEKISTAN	9	ZIMBABWE	46
VENEZUELA	203	<b>OTHER</b>	<b>95</b>
VIETNAM	256	<b>STATELESS</b>	<b>1</b>

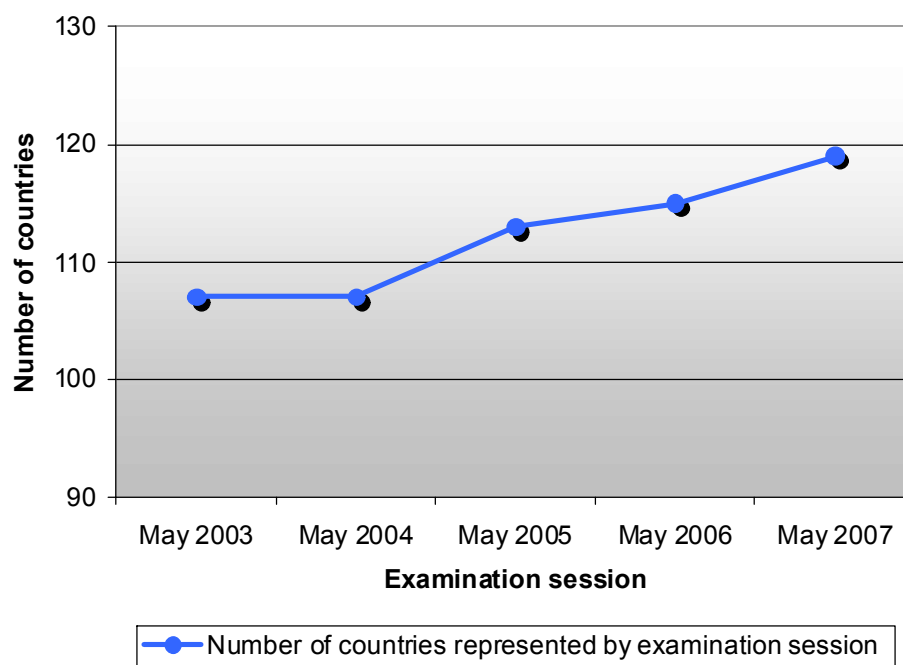
**Total number of nationalities: 226 (196 are above, and 30 other nationalities are from dual nationality candidates whose second nationality is not in the above)**

**Candidates with dual nationality (Second nationality is not included in the above): 8, 425**

## 20 Number of countries represented by examination session May 2003–May 2007

Number of countries represented by examination session	May 2003	May 2004	May 2005	May 2006	May 2007
	107	107	113	115	119

Graph 20.1 Number of countries represented by examination session May 2003–May 2007



## 21 Number of candidates registered by country May 2007

Country name	Number of candidates registered	Country name	Number of candidates registered
ANGOLA	8	LUXEMBOURG	75
ARGENTINA	121	MACEDONIA	21
AUSTRALIA	132	MALAWI	22
AUSTRIA	274	MALAYSIA	707
AZERBAIJAN	10	MALTA	25
BAHAMAS	53	MAURITIUS	14
BAHRAIN	249	MEXICO	1,919
BANGLADESH	36	MONACO	25
BELGIUM	294	MONGOLIA	8
BERMUDA	73	MOROCCO	85
BOLIVIA	22	MOZAMBIQUE	8
BOSNIA AND HERZEGOVINA	37	NAMIBIA	15
BOTSWANA	2	NETHERLANDS	1,661
BRAZIL	390	NETHERLANDS ANTILLES	25
BRUNEI DARUSSALAM	47	NEW ZEALAND	55
BULGARIA	18	NICARAGUA	12
CAMBODIA	22	NIGERIA	12
CANADA	7,384	NORWAY	662
CHILE	77	OMAN	116
CHINA	838	PAKISTAN	22
COLOMBIA	543	PALESTINIAN TERRITORY, OCCUPIED	47
COSTA RICA	104	PANAMA	35
CROATIA	38	PAPUA NEW GUINEA	1
CUBA	4	PERU	78
CYPRUS	28	PHILIPPINES	273
CZECH REPUBLIC	126	POLAND	493
DENMARK	316	PORTUGAL	168
DOMINICAN REPUBLIC	27	QATAR	87
ECUADOR	337	ROMANIA	44
EGYPT	243	RUSSIAN FEDERATION	108
EL SALVADOR	81	SAUDI ARABIA	201
ESTONIA	4	SENEGAL	21
ETHIOPIA	67	SERBIA	9
FINLAND	394	SINGAPORE	486
FRANCE	456	SLOVAKIA	37
GERMANY	744	SLOVENIA	67
GHANA	144	SOUTH AFRICA	32
GREECE	444	SPAIN	1,201
GUAM	51	SRI LANKA	49
GUATEMALA	5	SWAZILAND	22
HONDURAS	104	SWEDEN	1,094
HONG KONG	422	SWITZERLAND	1,012
HUNGARY	72	SYRIAN ARAB REPUBLIC	19
ICELAND	21	TAIWAN	340
INDIA	995	TANZANIA, UNITED REPUBLIC OF	91
INDONESIA	527	THAILAND	567

Country name	Number of candidates registered	Country name	Number of candidates registered
IRAN, ISLAMIC REPUBLIC OF	17	TOGO	35
IRELAND	20	TUNISIA	25
ISRAEL	25	TURKEY	398
ITALY	502	UGANDA	54
JAPAN	346	UKRAINE	24
JORDAN	246	UNITED ARAB EMIRATES	246
KAZAKHSTAN	14	UNITED KINGDOM	2,892
KENYA	178	UNITED STATES	45,407
KOREA, REPUBLIC OF	230	URUGUAY	187
KUWAIT	61	VENEZUELA	173
LATVIA	42	VIETNAM	86
LEBANON	106	ZAMBIA	35
LESOTHO	48	ZIMBABWE	23
LITHUANIA	59	<b>Total number of candidates registered</b>	<b>79,934</b>

## PART C: results statistics

### 22 Analysis of examination results by subject and level May 2007

Subject	Level	Number of candidates	Percentage of candidates awarded grades							Mean grade
			1	2	3	4	5	6	7	
<b>GROUP 1</b>										
ALBANIAN A1	HL	1						100		6.00
ALBANIAN A1	SL	12						33	67	6.67
AMHARIC A1	HL	3						67	33	6.33
AMHARIC A1	SL	13					8	62	31	6.23
ARABIC A1	HL	135				9	46	40	5	5.41
ARABIC A1	SL	199				2	45	49	5	5.57
B/RUSSIAN A1	SL	2							100	7.00
BENGALI A1	SL	5				20	40	20	20	5.40
BOSNIAN A1	HL	32				19	47	31	3	5.19
BOSNIAN A1	SL	3					33	33	33	6.00
BULGARIAN A1	HL	13						38	62	6.62
BULGARIAN A1	SL	6					33	17	50	6.17
BURMESE A1	SL	6					50	50		5.50
CATALAN A1	HL	28				7	43	43	7	5.50
CATALAN A1	SL	13				15	38	38	8	5.38
CHINESE A1	HL	207			3	11	43	34	9	5.36
CHINESE A1	SL	232			3	11	39	39	8	5.38
CROATIAN A1	HL	12					42	25	33	5.92
CROATIAN A1	SL	24				13	46	29	13	5.42
CZECH A1	HL	54				9	44	44	2	5.39
CZECH A1	SL	8			13	13	25	13	38	5.50
DANISH A1	HL	116				6	28	45	21	5.80
DANISH A1	SL	72				13	32	31	25	5.68
DHIVEHI A1	SL	1					100			5.00
DUTCH A1	HL	50			12	38	40	8	2	4.50
DUTCH A1	SL	116			3	24	46	25	3	5.01
DZONGKHA A1	SL	5					20	60	20	6.00
ENGLISH A1	HL	27,922		0	5	33	42	17	3	4.79
ENGLISH A1	SL	5,650		0	3	28	41	22	5	4.95
ESTONIAN A1	SL	5					60	40		5.40
FAROESE A1	HL	1					100			5.00
FINNISH A1	HL	140				6	34	46	15	5.70
FINNISH A1	SL	120			1	12	31	40	17	5.60
FRENCH A1	HL	413			2	20	40	29	8	5.21
FRENCH A1	SL	192		1	4	15	40	32	8	5.22
GALICIAN A1	SL	1						100		6.00
GERMAN A1	HL	585			2	10	40	34	14	5.48
GERMAN A1	SL	238			0	7	38	42	12	5.58
HEBREW A1	HL	8							100	7.00
HEBREW A1	SL	26					4	35	62	6.58
HINDI A1	HL	1					100			5.00
HINDI A1	SL	21				14	29	38	19	5.62

Subject GROUP 1	Level	Number of candidates	Percentage of candidates awarded grades							Mean grade
			1	2	3	4	5	6	7	
HUNGARIAN A1	HL	17				6	18	65	12	5.82
HUNGARIAN A1	SL	35			11	9	29	37	14	5.34
ICELANDIC A1	HL	5					40	40	20	5.80
ICELANDIC A1	SL	1					100			5.00
INDONESIAN A1	HL	85				1	33	42	24	5.88
INDONESIAN A1	SL	83				2	29	48	20	5.87
ITALIAN A1	HL	140			7	39	35	16	4	4.70
ITALIAN A1	SL	50		6	10	24	30	20	10	4.78
JAPANESE A1	HL	118				2	10	47	42	6.28
JAPANESE A1	SL	81				5	14	38	43	6.20
KHEMER A1	SL	1							100	7.00
KOREAN A1	HL	114					5	47	47	6.42
KOREAN A1	SL	79					6	42	52	6.46
LATVIAN A1	HL	31				6	39	52	3	5.52
LATVIAN A1	SL	4						50	50	6.50
LITHUANIAN A1	HL	19				11	5	16	68	6.42
LITHUANIAN A1	SL	43			2	5	16	56	21	5.88
MACEDONIAN A1	HL	21						24	76	6.76
MACEDONIAN A1	SL	1							100	7.00
MALAY A1	HL	4					50	50		5.50
MALAY A1	SL	480					0	10	89	6.89
MOD. GREEK A1	HL	176			1	15	44	30	11	5.34
MOD. GREEK A1	SL	117		1		17	26	38	18	5.54
MONGOLIAN A1	HL	3						67	33	6.33
MONGOLIAN A1	SL	12					8	50	42	6.33
NEPALI A1	SL	4						25	75	6.75
NORWEGIAN A1	HL	232			2	11	36	29	22	5.57
NORWEGIAN A1	SL	67			7	12	27	34	19	5.46
PERSIAN A1	HL	3				33	33	33		5.00
PERSIAN A1	SL	9			22	33	22	22		4.44
PILIPINO A1	HL	1				100				4.00
POLISH A1	HL	170		1	5	18	44	29	4	5.05
POLISH A1	SL	286			5	20	34	36	5	5.17
PORTUGUESE A1	HL	77		4	5	36	36	17	1	4.61
PORTUGUESE A1	SL	86		6	20	19	33	15	8	4.56
PUNJABI A1	SL	2				50	50			4.50
Q'EQCHI A1	SL	1							100	7.00
ROMANIAN A1	HL	8				38	25	25	13	5.13
ROMANIAN A1	SL	5				20	40	40		5.20
RUSSIAN A1	HL	37			3	3	30	35	30	5.86
RUSSIAN A1	SL	125			2	15	42	34	7	5.28
SERBIAN A1	HL	6					17	17	67	6.50
SERBIAN A1	SL	15					13	53	33	6.20
SESOTHO A1	HL	13					46	54		5.54
SESOTHO A1	SL	17					24	65	12	5.88
SHONA A1	SL	2						50	50	6.50
SINHALESE A1	SL	1							100	7.00
SLOVAK A1	HL	12				17	17	58	8	5.58

SLOVAK A1	SL	23				9	57	26	9	5.35
SLOVENE A1	HL	40					3	70	28	6.25
SLOVENE A1	SL	2						100		6.00
SOMALI A1	SL	1						100		6.00
SPANISH A1	HL	2,168	1	10	34	34	16	4		4.65
SPANISH A1	SL	436	1	11	26	34	23	6		4.86
SWAHILI A1	HL	2					100			5.00
SWAHILI A1	SL	5						60	40	6.40
SWEDISH A1	HL	388		2	12	32	39	14		5.52
SWEDISH A1	SL	314	1	0	5	32	47	15		5.69
TAMIL A1	SL	1					100			5.00
THAI A1	HL	11				9	55	36		5.27
THAI A1	SL	39				15	38	38	8	5.38
TIBETAN A1	SL	1							100	7.00
TIGRINYA A1	SL	1					100			5.00
TURKISH A1	HL	135				1	16	46	36	6.17
TURKISH A1	SL	157		1	3	25	44	27		5.94
UKRANIAN A1	SL	2						50	50	6.50
URDU A1	SL	10					20	80		5.80
VIETNAMESE A1	HL	39						50	50	6.50
VIETNAMESE A1	SL	16					3	67	31	6.28
<b>GROUP 1 TOTAL</b>		<b>43,381</b>	<b>0</b>	<b>4</b>	<b>29</b>	<b>40</b>	<b>21</b>	<b>6</b>		<b>4.94</b>

Subject	Level	Number of candidates	Percentage of candidates awarded grades							Mean grade
			1	2	3	4	5	6	7	
<b>GROUP 2</b>										
ARABIC A2	HL	67					7	72	21	6.13
ARABIC A2	SL	35						71	29	6.29
ARABIC AB.	SL	83		4	11	24	19	31	11	4.96
ARABIC B	HL	212			0	1	15	57	27	6.09
ARABIC B	SL	89				2	11	47	39	6.24
CANTONESE B	HL	9						78	22	6.22
CANTONESE B	SL	10				10		60	30	6.10
CHINESE A2	HL	74					11	65	24	6.14
CHINESE A2	SL	51				2	20	59	20	5.96
CLASS. GREEK	HL	9					22	22	56	6.33
CLASS. GREEK	SL	3			100					3.00
DANISH B	HL	41				5	29	46	20	5.80
DANISH B	SL	36			3	11	19	42	25	5.75
DUTCH A2	HL	44			2	27	45	18	7	5.00
DUTCH A2	SL	50			6	20	42	26	6	5.06
DUTCH B	HL	70				11	26	43	20	5.71
DUTCH B	SL	40				23	40	28	10	5.25
ENGLISH A2	HL	3,950			1	13	46	36	5	5.31
ENGLISH A2	SL	1,467			1	9	39	44	8	5.50
ENGLISH B	HL	4,046		0	1	9	25	50	14	5.67
ENGLISH B	SL	1,763		0	2	9	19	49	21	5.78
FINNISH B	HL	21					10	52	38	6.29
FINNISH B	SL	35				3	9	46	43	6.29
FRENCH A2	HL	211			0	8	43	45	4	5.44

Subject GROUP 2	Level	Number of candidates	Percentage of candidates awarded grades							Mean grade
			1	2	3	4	5	6	7	
FRENCH A2	SL	323			0	15	45	37	3	5.27
FRENCH AB INITIO	SL	995	1	5	13	18	29	25	9	4.82
FRENCH B	HL	2,105		2	6	17	24	38	13	5.31
FRENCH B	SL	7,834	0	2	10	24	32	25	6	4.87
GERMAN A2	HL	264				15	25	34	26	5.71
GERMAN A2	SL	89				4	40	38	17	5.67
GERMAN AB INITIO	SL	378		2	3	17	32	32	14	5.31
GERMAN B	HL	532			4	14	26	36	21	5.55
GERMAN B	SL	1,275		0	8	25	29	25	12	5.05
HEBREW B	SL	68		6	9	24	21	21	21	5.03
HINDI AB INITIO	SL	12		8	17		25	17	33	5.25
HINDI B	HL	70				4	33	57	6	5.64
HINDI B	SL	187			1	2	39	57	2	5.57
INDONESIAN AB INITIO	SL	11			9	9		64	18	5.73
INDONESIAN B	HL	22					32	55	14	5.82
INDONESIAN B	SL	28				7	39	32	21	5.68
ITALIAN A2	HL	10				10	50	40		5.30
ITALIAN A2	SL	3					67	33		5.33
ITALIAN AB INITIO	SL	443		12	22	17	22	15	12	4.44
ITALIAN B	HL	146		2	3	12	23	27	34	5.71
ITALIAN B	SL	228	0	7	25	28	11	16	12	4.39
JAPANESE A2	HL	74					14	47	39	6.26
JAPANESE A2	SL	27					11	70	19	6.07
JAPANESE AB INITIO	SL	227		1	12	18	32	20	17	5.08
JAPANESE B	HL	44			9	5	9	32	45	6.00
JAPANESE B	SL	256		2	13	32	26	15	13	4.77
KOREAN B	HL	22					5	32	64	6.59
KOREAN B	SL	70				10	31	30	29	5.77
LATIN	HL	124		6	9	20	25	24	16	5.02
LATIN	SL	509	6	21	18	20	18	10	6	3.78
MALAY AB INITIO	SL	39			8	18	36	31	8	5.13
MANDARIN AB INITIO	SL	257	0	1	7	17	30	27	18	5.27
MANDARIN B	HL	253			1	3	11	43	41	6.21
MANDARIN B	SL	509		1	6	11	14	33	36	5.80
MOD. GREEK A2	HL	31			3	23	29	29	16	5.32
MOD. GREEK A2	SL	26			4	4	42	35	15	5.54
MOD. GREEK B	SL	27			4	4	15	52	26	5.93
NORWEGIAN A2	HL	9						44	56	6.56
NORWEGIAN A2	SL	5					40		60	6.20
NORWEGIAN B	HL	59				5	20	46	29	5.98
NORWEGIAN B	SL	32		3			19	41	38	6.06
PILIPINO A2	HL	18					6	44	50	6.44
PILIPINO A2	SL	6					33	50	17	5.83
PORTUGUESE A2	HL	71					35	56	8	5.73
PORTUGUESE A2	SL	45				4	44	42	9	5.56
PORTUGUESE B	HL	44				5	20	36	39	6.09
PORTUGUESE B	SL	34				6	21	35	38	6.06
RUSSIAN A2	HL	9				11	33	11	44	5.89



Subject	Level	Number of candidates	Percentage of candidates awarded grades							Mean grade
			1	2	3	4	5	6	7	
<b>GROUP 2</b>										
RUSSIAN A2	SL	3							100	7.00
RUSSIAN AB INITIO	SL	50			4	22	32	28	14	5.26
RUSSIAN B	HL	45			2	4	7	29	58	6.36
RUSSIAN B	SL	59		2	5	20	24	10	39	5.53
SPANISH A2	HL	377		0	3	15	53	25	3	5.11
SPANISH A2	SL	163		2	23	19	26	26	4	4.63
SPANISH AB INITIO	SL	1,847	0	4	12	20	24	27	13	4.95
SPANISH B	HL	2,745	0	2	5	17	22	37	18	5.39
SPANISH B	SL	10,538	0	2	11	27	27	26	8	4.87
SWAHILI AB INITIO	SL	12			8	17	33	17	25	5.33
SWEDISH A2	HL	28					7	57	36	6.29
SWEDISH A2	SL	40					18	45	38	6.20
SWEDISH B	HL	70		1	1	9	17	40	31	5.87
SWEDISH B	SL	118	1	6	5	12	28	32	16	5.21
THAI A2	HL	16					13	38	50	6.38
THAI A2	SL	21						43	57	6.57
THAI B	HL	3						67	33	6.33
THAI B	SL	3						100		6.00
URDU B	HL	7						100		6.00
URDU B	SL	9					11	67	22	6.11
<b>GROUP 2 TOTAL</b>		<b>46,420</b>	<b>0</b>	<b>2</b>	<b>7</b>	<b>18</b>	<b>29</b>	<b>33</b>	<b>11</b>	<b>5.17</b>

Subject	Level	Number of candidates	Percentage of candidates awarded grades							Mean grade
			1	2	3	4	5	6	7	
<b>GROUP 3</b>										
BUSINESS & MANAGEMENT	HL	2,343	0	3	13	32	33	16	4	4.56
BUSINESS & MANAGEMENT	SL	2,309	1	7	16	22	29	21	5	4.55
ECO. AND SOC.	SL	206		4	14	28	26	21	7	4.66
ECONOMICS	HL	4,858	0	1	11	18	33	24	13	5.06
ECONOMICS	SL	4,242	0	2	13	19	31	24	12	4.95
GEOGRAPHY	HL	1,911	0	2	5	20	29	31	14	5.25
GEOGRAPHY	SL	1,592	0	6	15	27	26	17	9	4.57
HISTORY OF AFRICA	HL	142	1	11	6	26	30	18	8	4.55
HISTORY OF AMERICAS	HL	14,910	0	2	14	35	34	13	3	4.49
HISTORY OF ASIA/MIDDLE EAST	HL	167			1	18	35	32	14	5.39
HISTORY OF ASIA/OCEANIA	HL	376		0	2	12	35	33	17	5.50
HISTORY OF EUROPE	HL	7,792	0	1	8	24	35	22	10	4.97
HISTORY	SL	3,930	0	1	7	24	39	22	6	4.92
ISLAMIC HISTORY	HL	44		2	2	18	48	27	2	5.02
ISLAMIC HISTORY	SL	68			24	13	22	37	4	4.85
ITGS*	HL	578	1	2	11	30	29	24	3	4.70
ITGS*	SL	1,662	0	5	13	32	35	13	2	4.43
PHILOSOPHY	HL	942		0	4	15	37	35	9	5.30
PHILOSOPHY	SL	1,210	0	3	14	23	26	22	12	4.84
PSYCHOLOGY	HL	2,558	0	5	11	32	33	15	4	4.51
PSYCHOLOGY	SL	5,911	1	7	18	31	26	12	4	4.27

SOCIAL & CULTURAL ANTHROPOLOGY	HL	218		6	16	20	32	22	4	4.58
SOCIAL & CULTURAL ANTHROPOLOGY	SL	866		1	9	27	46	15	3	4.74
<b>GROUP 3 TOTAL</b>		<b>58,835</b>	<b>0</b>	<b>3</b>	<b>12</b>	<b>27</b>	<b>32</b>	<b>18</b>	<b>7</b>	<b>4.71</b>

\*ITGS = INFORMATION TECHNOLOGY IN A GLOBAL SOCIETY

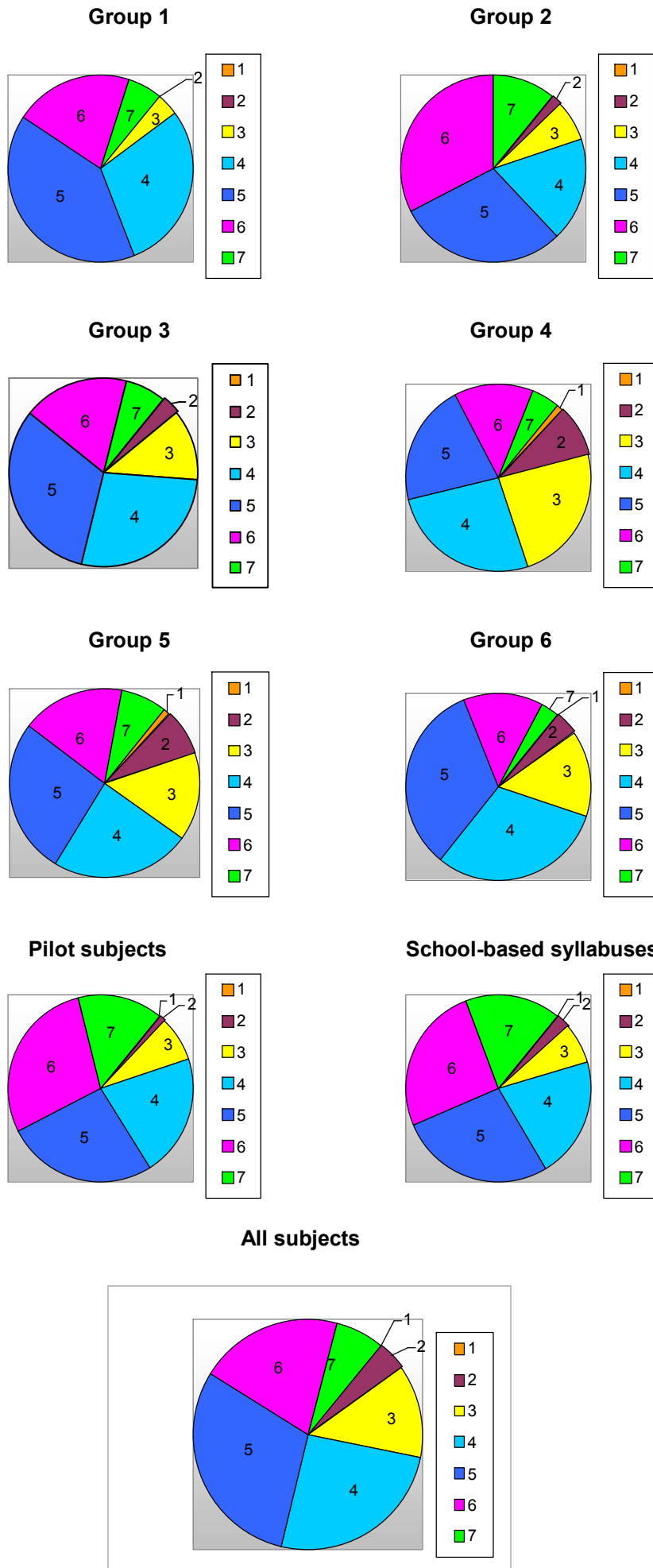
Subject	Level	Number of candidates	Percentage of candidates awarded grades							Mean grade
			1	2	3	4	5	6	7	
<b>GROUP 4</b>										
BIOLOGY	HL	14,792	0	9	25	28	21	14	3	4.14
BIOLOGY	SL	9,299	0	6	25	27	21	16	4	4.30
CHEMISTRY	HL	7,631	1	9	16	24	21	20	9	4.53
CHEMISTRY	SL	7,997	1	13	27	26	20	11	3	3.92
DESIGN TECHNOLOGY	HL	343		3	8	26	38	21	4	4.79
DESIGN TECHNOLOGY	SL	352	0	12	25	29	22	9	3	4.01
ECOSYSTEMS AND SOCIETIES	SL	206		4	14	28	26	21	7	4.66
ENVIRONMENTAL SYSTEMS	SL	3,229	0	12	23	25	26	11	3	4.09
PHYSICS	HL	5,069	0	5	23	26	22	16	8	4.47
PHYSICS	SL	7,223	1	10	27	26	20	11	5	4.07
<b>GROUP 4 TOTAL</b>		<b>56,141</b>	<b>1</b>	<b>9</b>	<b>24</b>	<b>26</b>	<b>21</b>	<b>14</b>	<b>5</b>	<b>4.21</b>

Subject	Level	Number of candidates	Percentage of candidates awarded grades							Mean grade
			1	2	3	4	5	6	7	
<b>GROUP 5</b>										
COMPUTER SCIENCE	HL	430	2	9	14	20	24	20	10	4.58
COMPUTER SCIENCE	SL	801	3	10	17	21	26	16	6	4.30
FURTHER MATHEMATICS	SL	93	4	13	15	18	16	15	18	4.47
MATHEMATICAL STUDIES	SL	15,742	0	6	11	32	30	16	4	4.49
MATHEMATICS	HL	7,603	1	10	16	23	25	17	8	4.43
MATHEMATICS	SL	18,941	1	8	17	19	25	20	10	4.60
MATHS CASE	HL	22		5	5	23	23	32	14	5.14
<b>GROUP 5 TOTAL</b>		<b>43,632</b>	<b>1</b>	<b>8</b>	<b>15</b>	<b>24</b>	<b>27</b>	<b>18</b>	<b>8</b>	<b>4.53</b>

Subject	Level	Number of candidates	Percentage of candidates awarded grades							Mean grade
			1	2	3	4	5	6	7	
<b>GROUP 6</b>										
MUSIC	HL	702	0	2	15	27	33	20	3	4.62
MUSIC COMPOSITION	SL	94		11	13	30	19	21	6	4.47
MUSIC GROUP PERFORMANCE	SL	684	0	1	8	26	41	21	2	4.80
MUSIC SOLO PERFORMANCE	SL	531		2	16	31	36	13	1	4.44
THEATRE ARTS	HL	1,544	0	2	22	32	31	12	2	4.35
THEATRE ARTS	SL	885	0	13	40	27	16	4	1	3.60
VISUAL ARTS	HL	4,514	0	3	10	30	35	18	4	4.68
VISUAL ARTS OPTION A	SL	2,589	0	6	12	32	34	12	3	4.42

VISUAL ARTS OPTION B	SL	492	2	15	26	30	22	4	1	3.73
<b>GROUP 6 TOTAL</b>		<b>12,035</b>	<b>0</b>	<b>4</b>	<b>15</b>	<b>30</b>	<b>33</b>	<b>14</b>	<b>3</b>	<b>4.45</b>
Subject	Level	Number of candidates	Percentage of candidates awarded grades							Mean grade
			1	2	3	4	5	6	7	
<b>PILOT SUBJECTS</b>										
DANCE	HL	93			4	25	23	34	14	5.29
DANCE	SL	21			19	24	43	10	5	4.57
FILM	HL	243		1	16	35	25	16	6	4.58
FILM	SL	96		3	14	25	34	20	4	4.67
TEXT & PERFORMANCE*	SL	110				2	55	36	7	5.49
WORLD CULT.**	SL	158				5	4	48	43	6.29
* Trans-disciplinary subject groups 1 and 6 ** Trans-disciplinary subject groups 3 and 6										
<b>PS TOTAL</b>		<b>721</b>		<b>1</b>	<b>8</b>	<b>21</b>	<b>26</b>	<b>29</b>	<b>15</b>	<b>5.20</b>
Subject	Level	Number of candidates	Percentage of candidates awarded grades							Mean grade
			1	2	3	4	5	6	7	
<b>SCHOOL-BASED SYLLABUSES</b>										
ART HISTORY	SL	122		3	12	34	34	16	2	4.51
BEGINNERS' NYNORSK	SL	9					22	33	44	6.22
CHILE & PACIFIC BASIN	SL	10				80	20			4.20
CHINESE STUDIES	SL	34			6	6	9	53	26	5.88
CLASSICAL GREEK & ROMAN STUDIES	SL	11					27	36	36	6.09
FOOD SCIENCE & TECHNOLOGY	SL	8		25		13	13	38	13	4.75
HISTORICAL & CONTEMPORARY BRAZILIAN STUDIES	SL	46		2	15	35	22	20	7	4.61
HUMAN RIGHTS	SL	30				10	23	37	30	5.87
PEACE & CONFLICT STUDIES	SL	67				9	24	37	30	5.88
POLITICAL THOUGHT	SL	25					20	32	48	6.28
SCIENCE TECHNOLOGY & SOCIETY	SL	34				26	44	29		5.03
SOCIAL STUDIES	SL	12				17	67	17		5.00
TURKISH SOCIAL STUDIES	SL	90	1	6	16	29	28	12	9	4.49
WORLD POLITICS	SL	56			4	16	25	38	18	5.50
WORLD RELIGIONS	SL	85		1	7	13	22	24	33	5.59
<b>SBS TOTAL</b>		<b>639</b>	<b>0</b>	<b>2</b>	<b>7</b>	<b>21</b>	<b>27</b>	<b>26</b>	<b>17</b>	<b>5.18</b>
<b>ALL SUBJECTS TOTAL</b>		<b>261,804</b>	<b>0</b>	<b>4</b>	<b>13</b>	<b>25</b>	<b>30</b>	<b>20</b>	<b>7</b>	<b>4.68</b>

Graph 22.1 Grade distribution by subject group May 2007



## 23 Diploma and retake candidates (D+R): distribution of points totals May 2007

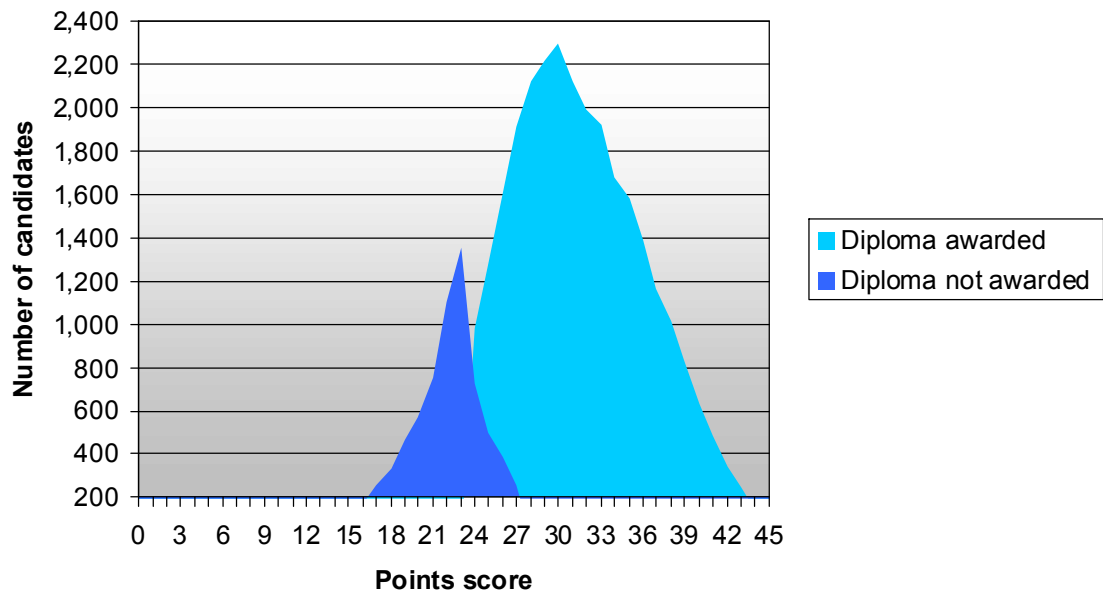
Total Points	Diploma awarded		Diploma not awarded		Cumulative
	Number of candidates	Percentage of candidates	Number of candidates	Percentage of candidates	
0					0.00%
1					0.00%
2			9	0.03%	0.03%
3			15	0.04%	0.07%
4			15	0.04%	0.11%
5			26	0.07%	0.18%
6			21	0.06%	0.24%
7			22	0.06%	0.30%
8			28	0.08%	0.38%
9			20	0.06%	0.44%
10			35	0.10%	0.54%
11			32	0.09%	0.63%
12			48	0.13%	0.76%
13			64	0.18%	0.94%
14			88	0.25%	1.19%
15			143	0.40%	1.59%
16			175	0.49%	2.08%
17			259	0.73%	2.81%
18			332	0.93%	3.74%
19			466	1.31%	5.05%
20			570	1.60%	6.65%
21			756	2.12%	8.77%
22			1,102	3.09%	11.87%
23		0.00%	1,355	3.81%	15.67%
24	983	2.76%	725	2.04%	20.47%
25	1,281	3.60%	496	1.39%	25.46%
26	1,610	4.52%	390	1.10%	31.08%
27	1,916	5.38%	252	0.71%	37.16%
28	2,129	5.98%	26	0.07%	43.22%
29	2,221	6.24%	17	0.05%	49.50%
30	2,300	6.46%	14	0.04%	56.00%
31	2,129	5.98%	19	0.05%	62.03%
32	1,992	5.59%	4	0.01%	67.64%
33	1,924	5.40%	2	0.01%	73.04%
34	1,682	4.72%	3	0.01%	77.78%
35	1,583	4.45%	2	0.01%	82.23%
36	1,392	3.91%	1	0.00%	86.14%
37	1,167	3.28%			89.42%
38	1,013	2.84%			92.26%
39	832	2.34%			94.60%
40	636	1.79%			96.38%
41	486	1.36%			97.75%
42	343	0.96%			98.71%
43	246	0.69%			99.40%
44	148	0.42%			99.82%
45	65	0.18%			100.00%
	<b>28,078</b>	<b>78.85%</b>	<b>7,532</b>	<b>21.2%</b>	<b>35,610</b>

## 24 Retake candidates only (R): distribution of points totals May 2007

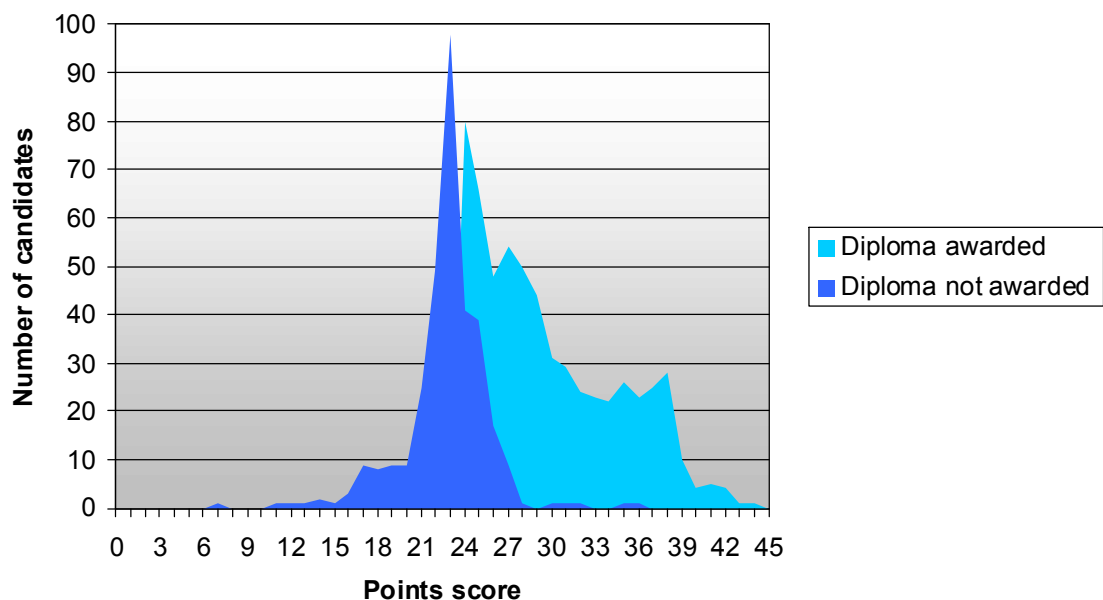
Total Points	Diploma awarded		Diploma not awarded		Cumulative
	Number of candidates	Percentage of candidates	Number of candidates	Percentage of candidates	
0					
1					0.00%
2					0.00%
3					0.00%
4					0.00%
5					0.00%
6					0.00%
7			1	0.11%	0.11%
8					0.11%
9					0.11%
10					0.11%
11			1	0.11%	0.22%
12			1	0.11%	0.32%
13			1	0.11%	0.43%
14			2	0.22%	0.65%
15			1	0.11%	0.76%
16			3	0.32%	1.08%
17			9	0.97%	2.05%
18			8	0.86%	2.91%
19			9	0.97%	3.88%
20			9	0.97%	4.85%
21			25	2.70%	7.55%
22			49	5.29%	12.84%
23			98	10.57%	23.41%
24	80	8.63%	41	4.42%	36.46%
25	66	7.12%	39	4.21%	47.79%
26	48	5.18%	17	1.83%	54.80%
27	54	5.83%	9	0.97%	61.60%
28	50	5.39%	1	0.11%	67.10%
29	44	4.75%			71.84%
30	31	3.34%	1	0.11%	75.30%
31	29	3.13%	1	0.11%	78.53%
32	24	2.59%	1	0.11%	81.23%
33	23	2.48%			83.71%
34	22	2.37%			86.08%
35	26	2.80%	1	0.11%	89.00%
36	23	2.48%	1	0.11%	91.59%
37	25	2.70%			94.28%
38	28	3.02%			97.30%
39	10	1.08%			98.38%
40	4	0.43%			98.81%
41	5	0.54%			99.35%
42	4	0.43%			99.78%
43	1	0.11%			99.89%
44	1	0.11%			100.00%
45	0	0.00%			100.00%
	598	64.51%	329	35.49%	

## 25 Diploma score distribution: diploma and retake candidates (D+R) and retake candidates only (R) May 2007

**Graph 25.1** Number of diploma and retake candidates with diplomas awarded and diplomas not awarded per points score May 2007



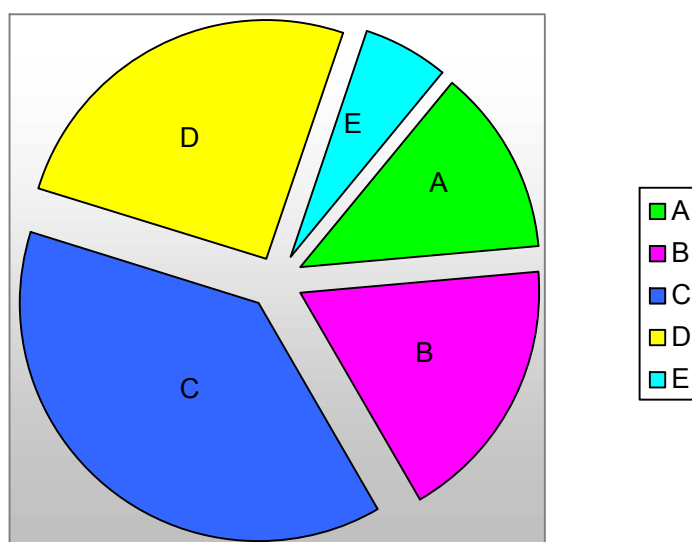
**Graph 25.2** Number of retake candidates only with diplomas awarded and diplomas not awarded per points score May 2007



## 26 Extended essay results May 2007

EE grade awarded per subject group	A	B	C	D	E	Total of candidates awarded grade	Total of all registered candidates	Percentage of candidates awarded grade
Group 1	1,131	1,218	1,890	818	140	5,092	5,232	97.32%
Group 2	416	451	618	314	57	1,856	1,878	98.83%
Group 3	1,943	3,184	7,470	5,075	1,102	18,774	18,953	99.06%
Group 4	309	774	2,074	1,836	559	5,552	5,579	99.52%
Group 5	134	127	318	245	65	889	898	99.00%
Group 6	374	433	831	499	81	2,218	2,232	99.37%
PS	18	14	23	11	2	68	68	100.00%
<b>Total</b>	<b>4,325</b>	<b>6,201</b>	<b>13,224</b>	<b>8,798</b>	<b>2,006</b>			
<b>Percentage of candidates awarded a particular grade</b>	<b>12.52%</b>	<b>17.95%</b>	<b>38.27%</b>	<b>25.46%</b>	<b>5.81%</b>	<b>34,554</b>	<b>34,840</b>	<b>99.18%</b>

Graph 26.1 Percentage of grades awarded: extended essay May 2007

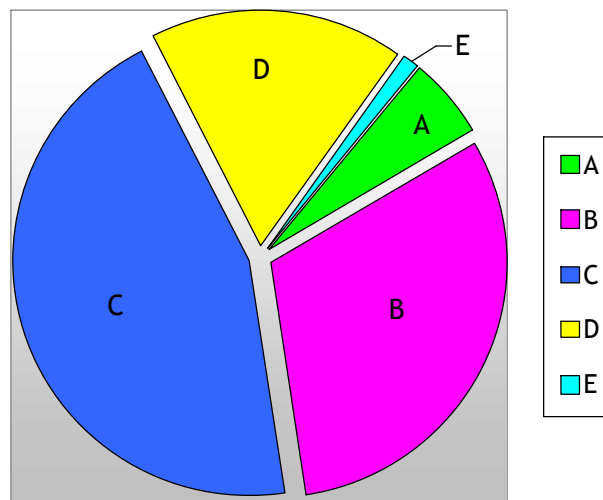




## 27 Theory of knowledge results May 2007

TOK grade awarded	A	B	C	D	E	Total of candidates awarded grade	Total of all registered candidates	Percentage of candidates awarded grade
Number of candidates awarded grade	1,890	10,665	15,577	6,048	389	34,569	34,894	99.07%
Percentage of candidates awarded grade	5.47%	30.85%	45.06%	17.50%	1.13%			

Graph 27.1 Percentage of grades awarded: theory of knowledge May 2007



## 28 Distribution of additional points May 2003–May 2007

Additional points		0	1	2	3	Total	Mean points
May 2003	Number of candidates awarded	6,873	9,699	3,581	2,033	22,186	1.03
	Percentage of candidates awarded	30.98%	43.72%	16.14%	9.16%	100.00%	
May 2004	Number of candidates awarded	7,443	10,889	3,917	2,344	24,593	1.05
	Percentage of candidates awarded	30.26%	44.28%	15.93%	9.53%	100.00%	
May 2005	Number of candidates awarded	7,884	12,478	4,329	2,683	27,374	1.07
	Percentage of candidates awarded	28.80%	45.58%	15.81%	9.80%	100.00%	
May 2006	Number of candidates awarded	9,714	14,132	4,873	2,734	31,453	1.02
	Percentage of candidates awarded	30.88%	44.93%	15.49%	8.69%	100.00%	
May 2007	Number of candidates awarded	11,115	15,976	5,296	2,862	35,249	1.00
	Percentage of candidates awarded	31.53%	45.32%	15.02%	8.12%	100.00%	

Graph 28.1 Distribution of additional points May 2007



## 29 Mean points score worldwide May 2003–May 2007

Mean score per examination session	May 2003	May 2004	May 2005	May 2006	May 2007
	30.26	30.41	30.09	29.89	29.56

## 30 Mean grade worldwide May 2003–May 2007

Mean grade per examination session	May 2003	May 2004	May 2005	May 2006	May 2007
	4.81	4.82	4.78	4.74	4.68

## 31 Pass rate worldwide May 2003–May 2007

Pass rate per examination session	May 2003	May 2004	May 2005	May 2006	May 2007
	81.99%	83.07%	81.40%	80.35%	78.77%

## 32 Number of diplomas and bilingual diplomas awarded May 2003–May 2007

Examination session	Number of bilingual diplomas awarded	Number of all diplomas awarded (includes bilingual diplomas)	Percentage of bilingual diplomas out of all diplomas awarded
May 2003	5,834	18,384	31.73%
May 2004	6,493	20,621	31.49%
May 2005	7,076	22,564	31.36%
May 2006	7,909	25,601	30.89%
May 2007	8,609	28,078	30.66%

## 33 Number of diplomas awarded by IB region May 2007

Number of bilingual diplomas awarded	IBAEM	IBAP	IBLA	IBNA	Total
	5,501	1,517	986	605	8,609
Number of all diplomas awarded (includes bilingual diplomas)	10,510	3,543	1,473	12,552	28,078